

General Language Enhancements

PxPlus 2016 (v13)



General Language Enhancements

- Improved JSON, Arrays and IOLIST handling
 - Two new directive to directly move values between associative arrays and IOLISTS

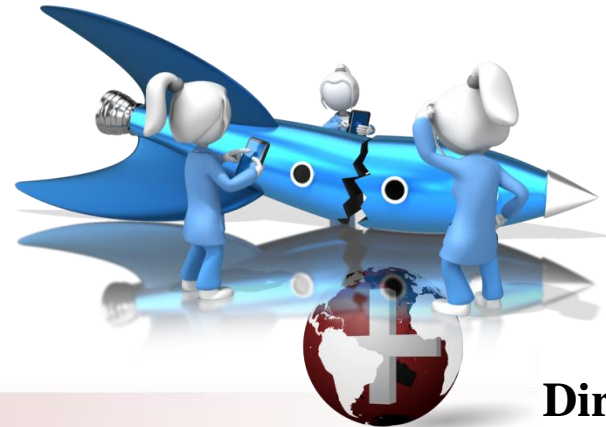
```
LOAD DATA TO array$ ,IOL=iolist, REC=recpfx$  
LOAD DATA FROM array$ ,IOL=iolist, REC=recpfx$
```

- **IOLIST**, if present, controls which variables to transfer
- Simplifies transfer of data between IOLISTS, Arrays, and JSON data



General Language Enhancements

- System failure analysis
 - New LOGFILE dump added to **BOTH** Windows and Linux
 - Outputs key system information when system fails
 - Allows you to help analyze what caused failure
- Many failures occur outside of the control of PxPlus



General Language Enhancements

- Error handling within Objects
- File locking and external Windows functions
 - Added 'XU' parameter to avoid hanging file locks while executing external logic
- Improved memory management on Windows
 - Faster memory allocations/de-allocations
- Now supports [wdx] and [lcl] prefix in PTH() function



General Language Enhancements

- Added built-in CRC32 calculation function
- New command line option *-A:path*
 - Allows for overriding the activation file location
- Recognizes Windows 10 in TCB(25)



Additional Resources

The help link(s) below refer to the current on-line help pages. The functionality may have been further updated since the PxPlus 2016 (version 13) release.

- [LOAD DATA TO Directive](#)
- [LOAD DATA FROM Directive](#)
- [Crash Analysis](#)
- ['XU' Parameter](#)
- [PTH\(\) Function](#)
- [Launching PxPlus](#)
- [CRC\(\) Function](#)
- [TCB\(\) Function](#)

