

# PxPlus Unbound Integration

PxPlus 2016 (v13)



**DireXions 2016**

# Agenda

- Messaging integration
  - New **SMS** send utility
  - Test **email** and email utility
- COM integration
  - **COM** overview
  - New **SimpleCOM** example
- Data integration
  - Enhanced **FTP** utility
  - Enhanced **PxPlus SQL ODBC Driver**



# Messaging Integration

Send messages from your application



# Messaging Integration

- Everyone has mobile devices



- How can you connect with them?



# Messaging Integration

- Connect with your users in new ways by integrating with outside messaging systems
  - **SMS** text messaging
  - **Email**



# New SMS Send Utility

- New SMS send utility: **\*tools/sms**
  - Easily send text messages from your program
- SMS web services supported

Name	Website	Group	International
SMS Matrix	<a href="http://www.smsmatrix.com/">http://www.smsmatrix.com/</a>	Yes	Yes
EZ Texting	<a href="https://www.eztexting.com/">https://www.eztexting.com/</a>	Yes	No
Group Texting	<a href="https://www.grouptexting.com/">https://www.grouptexting.com/</a>	Yes	No
Nexmo	<a href="https://www.nexmo.com/">https://www.nexmo.com/</a>	No	Yes
Twilio	<a href="https://www.twilio.com/">https://www.twilio.com/</a>	No	Yes



# How to Use SMS Send Utility

- To send a SMS text message call **\*tools/sms;send**

```
CALL "*tools/sms;send", smsService$, accountInfo$, to$, message$
```

- Based on choice of SMS web service

smsService\$	accountInfo\$
"smsmatrix" "eztexting" "grouptexting"	"username;password"
"nexmo"	"api_key;api_secret;nexmo_phone_number"
"twilio"	"account_sid;auth_token;twilio_phone_number"



# How to Use SMS Send Utility

- To send a SMS text message call **\*tools/sms;send**

```
CALL "*tools/sms;send", smsService$, accountInfo$, to$, message$
```

- Phone number format is 15551234567
  - Not international: don't include country code i.e. 5551234567
- If **message\$** larger then 160 characters, it will be split into multiple text messages





# SMS Send Utility Demo

- Credit limit SMS text message warning
  - Canadian Automotive Toys Store Demo
    - Client notification setting
    - Notification sent when credit limit exceeded via new invoice



# New Email Test Utility

- New email test utility: **\*web/testemail**
  - Sends test email to many addresses
  - Displays required **\*web/email** code
  - Validates **SMTP** server and security

Test Type	Description	Port
test	Connects unencrypted	25
ssl_test	Connects vis <b>SSL</b> encryption	465
starttls_test	Connects vis <b>STARTTLS</b> encryption	587

- Displays helpful error messages



# How to Use Test Email Utility

- Send test email by calling **\*web/testemail**

```
CALL "*web/testemail;test", from$, smtpServer$, username$, password$, to$  
CALL "*web/testemail;ssl_test", from$, smtpServer$, username$, password$, to$  
CALL "*web/testemail;starttls_test", from$, smtpServer$, username$, password$, to$
```

- The default port can be overridden via **smtpServer\$**
- Ability to send test email to a list of addresses



# Email Utility

- The email utility: **\*web/email**
  - Send emails from your application
  - Send mime-compliant messages
    - text
    - html
    - multimedia: images, sounds, and videos
  - Send attachments
  - Request receipt or read confirmation



# Email Utility

- Specify message priority
- Generate .EML files
  - **\*web/outbox** if no **SMTP** server specified
  - **\*web/outbox/new** before it is sent
  - **\*web/outbox/send** or another directory after it is sent
- Advanced utility
  - Configurable with many options
  - Use output of **\*web/testemail** then customize



# How to Use Email Utility

- To send email call **\*web/email**

```
CALL "*web/email", fromAddress$, replyAddress$, toAddress$, ccAddress$,  
bccAddress$, subject$, message$, attachments$, option$, smtpServer$,  
serverTimeout, lineWrapsAt, bodyEncoding$, eraseIt, errorMesg$,  
sendDirectory$, savedFilename$
```

- **message\$** supports embedded files/multimedia
- **option\$** sets priority or turns on delivery/read receipts
- **smtpServer\$** specifies the address, port, username, password, and SSL setting
- **eraseIt** controls sent .EML file creation



# Email Utility Demo

- Credit limit email warning example
  - Canadian Automotive Toys Store Demo
    - Client notification setting
    - Notification sent when credit limit exceeded via new invoice
  - **\*web/testemail** used to generate **\*web/email** call



# COM Integration

Work with external components





# COM Integration

- **C**omponent **O**bject **M**odel
  - Control **.NET** components using an object interface
  - COM also known as **OLE/OCX/ActiveX**
- COM component examples
  - Excel
  - Progress bar control
  - Shell Explorer control



# COM Integration

- Work with **.NET** components via **COM** objects
  - Get and set COM object properties
    - Obtain information from the .NET component
    - Change the behavior of the .NET component
  - Execute COM object methods
    - Make the .NET component do the work
  - Subscribe to COM object events
    - React when something happens in the .NET component
      - Button click
      - File save



# COM Component Browser

## ● PVXTLB.EXE

- Lists COM components on system via Open
- Type information about COM objects
  - COM name/Class and GUID
  - Descriptions of methods, properties, and events
- Generate PxPlus object for event handling
- Download from: <http://ftp.pvxplus.com/downloads/misc/PVXTLB.EXE>



# Working with COM Objects

- Create and initialize COM object

```
DEF OBJECT ExcelHandle, "Excel.Application"  
DEF OBJECT ExcelHandle, "*"
```

- Special case "\*" lists all ActiveX COM components



# Working with COM Objects

- Work with COM object
  - Access properties and methods via ' (tick)

```
ExcelHandle'Calculate()  
ExcelHandle'Visible
```

- List all methods and properties via '\* (tick asterisk)

```
PRINT ExcelHandle'*
```



# Working with COM Objects

- Extended properties and methods
  - **pvxHandle**
    - Container window handle
  - **pvxIsA\$**
    - Internal COM object class name
  - **pvxDescribe\$(member\$)**
    - Information describing the member, its return type, as well as parameters and their types
  - *+More*



# Working with COM Objects

- Extended helper objects
  - Used for COM data handling
  - **\*Variant**
    - Store any data type
    - Optionally passed by reference
    - Convert PxPlus data types to automation types
  - **\*VarArray**
    - Each element can accept data of any type
    - Passed by reference
  - *+More*



# Working with COM Objects

- Disconnect COM object and cleanup resources
  - Two options available using different directives

```
DROP OBJECT ExcelHandle  
DELETE OBJECT ExcelHandle
```





# Working with COM Events

- A couple of options to subscribe to COM events
  - Link events to COM event object

```
ExcelEvents = NEW("ExcelEvents")  
ON EVENT FROM ExcelHandle PROCESS ExcelEvents
```

- Generate a CTL on COM event

```
ON EVENT "SheetChange" FROM ExcelHandle PREINPUT 500
```



# Working with COM Events

- COM event object
  - Requires a method written for each event to be handled

```
DEF CLASS "ExcelEvents"  
FUNCTION SheetChange(sheet, target) SHEET_CHANGE FOR EVENT SAME  
END DEF  
SHEET_CHANGE:  
ENTER sheet, target  
! Handle event here  
RETURN
```

- **TCB(120)** returns a handle to the COM object
- Can be generated via **PVXTLB.EXE**



# Working with COM Events

- Unsubscribe from events
  - Unlink events from a COM event object

```
ON EVENT FROM ExcelHandle PROCESS 0  
DROP OBJECT ("ExcelEvents")
```

- Stop generating CTL for COM event

```
ON EVENT "onChange" FROM ExcelHandle PREINPUT 0
```



# .NET With no COM Interface

- Some **.NET** components have no **COM** interface
  - Barcode scanner
  - Credit card reader
  - Phone system
- How do you work with them from PxPlus?
  - No easy interactive way that supports events
  - Need to build COM wrapper for .NET component



# COM Wrapper

- Written in .NET language i.e. C#, VB.NET, etc.
- Import .NET component
- Define COM class object
  - Wrapper for .NET component
  - Define COM interfaces
  - Syntax is defined by the COM standard



# COM Wrapper Example

- An example, to better understand a COM wrapper
  - The **SimpleCOM** example

Component	Description
SimpleCOM	Visual Studio solution that contains the two projects listed below <ol style="list-style-type: none"><li>1. SimpleApp - Application/Library Project</li><li>2. SimpleCOM - <b>COM</b> Wrapper Project</li></ol>
SimpleCOMEvents	PxPlus <b>COM</b> event object with logic to handle event in PxPlus
SimpleCOMTest	PxPlus test program

- Download from:  
<http://ftp.pvxplus.com/downloads/misc/SimpleCOM.zip>



# COM Integration Demo

- Demo subscribing to an event from **SimpleApp** using the COM wrapper **SimpleCOM**
  - **SimpleApp** is a dialog box with a button that counts number of clicks
- Walkthrough **SimpleCOM** example code



# Data Integration

Your data anywhere





# Data Integration

- Easily exchange data over a network
  - Send reports to stake holders
  - Download images and documents



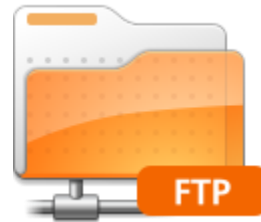
# Data Integration

- Bring you business data to life using business intelligence and data visualization tools
  - Excel/PivotCharts
  - Crystal Reports



# FTP Utility

- Original FTP utility
  - Handles FTP communication manually
  - Limited FTP protocol support
  - Performance not ideal



# Enhanced FTP Utility

- Major enhancements
  - Uses industry standard tool **curl** for FTP communication
  - Full FTP protocol support
  - SFTP support Planned for 2017
- Massive speed improvement
  - **10** to **20** times faster than previous utility



# Enhanced FTP Utility

- Easier to use
  - Supports both \ and / as a directory delimiter
  - Optional directory delimiter at end of directory path
- Regular expression support added to file list
  - Use powerful **MSK()** pattern matching
- New list command
  - Get a directory listing from a FTP server



# How to Use FTP Utility

- To list a FTP directory call

```
CALL "*web/ftp;list", ftpServer$, user$, password$, timeout, recursion,  
result$
```

- To list a sub-directory append it to the ftpServer\$
- The directory listing or error is returned via result\$



# How to Use FTP Utility

- To transfer files via FTP call **\*web/ftp**

```
CALL "*web/ftp;send", ftpServer$, user$, password$, timeout,  
filesToSend$, uploadDir$, case$, result$
```

```
CALL "*web/ftp;receive", ftpServer$, user$, password$, timeout,  
filesToReceive$, downloadDir$, case$, result$
```

- **filesTonnn\$** list of files/directories to transfer
  - ASCII/binary, overwrite, recursion, and wildcard/mask options
  - Wildcards (**\*** or **?**) or regular expressions (**MSK()**)
  - Example: **Data|B2R;Reports\\*.pvr|B0**



# FTP Utility Demo

- Generate and upload reports example
  - Upload generated PDF report to demo FTP server





# Enhanced PxPlus SQL ODBC Driver

- Introducing the new **SQL ODBC** products
  - Many new features and enhancements
  - **SQL** is now in the name

PxPlus ODBC Driver



PxPlus SQL ODBC Driver

PxPlus File Server



PxPlus SQL Server



# Enhanced PxPlus SQL ODBC Driver

- More platforms supported
  - 64-bit UNIX/Linux **PxPlus SQL Server**
    - Views support with 64-bit PxPlus
    - No need for 32-bit libraries
  - UNIX/Linux **PxPlus SQL ODBC Driver**
    - iSQL
    - LibreOffice
    - Apache/PHP



# Enhanced PxPlus SQL ODBC Driver

- Previous ODBC driver conforms to older standards
  - Incompatible with some ODBC applications
    - Visual Studio
    - Excel Data Connection Wizard
    - **OLE DB ODBC** and **.NET ODBC** providers
- New **PxPlus SQL ODBC Driver** conforms to the latest ODBC standards
  - Compatible with all ODBC applications



# More Flexible SQL Syntax

- Required escape syntax for joins, dates, and functions

```
SELECT C.ClientId, {FN UCASE(C.ClientName)}, I.InvoiceNumber, I.DueDate
FROM {OJ 'Client Master File' C
LEFT JOIN 'Invoice Header' I ON C.ClientId=I.ClientId }
WHERE I.DueDate <= {D '2016-12-31'}
```

- Still supported but now optional

```
SELECT C.ClientId, UCASE(C.ClientName), I.InvoiceNumber, I.DueDate
FROM 'Client Master File' C
LEFT JOIN 'Invoice Header' I ON C.ClientId=I.ClientId
WHERE I.DueDate <= '2016-12-31'
```



# More Flexible SQL Syntax

- Comments are now supported

```
//this is a line comment  
/* this is a  
   multi-line comment */
```

- Automatic conversion
  - In PxPlus, **0/""** and **NULL** are the same, in SQL they are not
    - **0/""** <-> **NULL**
    - String -> number



# More Flexible SQL Syntax

- Nested 3+ table join syntax

```
SELECT *  
FROM {OJ 'Invoice Header' I  
LEFT JOIN 'Client Master File' C  
LEFT JOIN 'Sales Rep' S  
ON C.SalesRep=S.SalesRepCode  
ON I.ClientID=C.ClientID }
```

- Modern 3+ table join syntax

```
SELECT *  
FROM 'Invoice Header' I  
LEFT JOIN 'Client Master File' C ON I.ClientID=C.ClientID  
LEFT JOIN 'Sales Rep' S ON C.SalesRep=S.SalesRepCode
```

# New SQL Syntax

- **table1** RIGHT [OUTER] JOIN **table2** ON **boolean**
  - Returns all rows from the right table (**table2**), with the matching rows in the left table (**table1**)
  - The result is **NULL** on the left side when there is no match

```
SELECT *  
FROM 'Client Master File'  
RIGHT JOIN 'Sales Rep' ON SalesRepCode=SalesRep
```



# New SQL Syntax

- `CAST(expression AS sql_type [(integer1[, integer2]])) / CONVERT(expression, sql_type)`
  - Convert/Cast result of an expression to a SQL data type
  - CAST optionally allows modifiers for
    - Length
    - Precision and optionally scale

```
SELECT CAST(ClientID AS SQL_NUMERIC (6, 0)) FROM 'Client Master File'  
SELECT CONVERT(ClientID, SQL_NUMERIC) FROM 'Client Master File'
```





# New SQL Syntax

- CASE **expression** WHEN **expression** THEN **expression** END /  
CASE WHEN **boolean** THEN **expression** END
  - Evaluates conditions and returns one of multiple possible result expressions
  - Two formats:
    - Simple CASE format compares an expression to a set of simple expressions
    - Searched CASE format evaluates a set of Boolean expressions
  - May have more than one WHEN clause
  - Both formats support an optional ELSE



# New SQL Syntax

- Example

```
SELECT  
CASE CRLimitNotify  
WHEN 'N' THEN 'None'  
WHEN 'T' THEN 'SMS Text Message'  
WHEN 'E' THEN 'Email Message'  
END  
FROM 'Client Master File' WHERE ClientID='054703'
```

```
SELECT  
CASE  
WHEN CRLimitNotify='T' OR CRLimitNotify='E' THEN 'Notification On'  
ELSE 'Notification Off'  
END  
FROM 'Client Master File' WHERE ClientID='065853'
```



# New SQL Syntax

- **select UNION [ALL] select**
  - Combines the results of two or more select statements
  - Removes duplicates and sort results unless ALL is used
  - **select** statements must have the same number of columns
  - Columns must have similar data types in same order

```
SELECT *  
FROM DivisionOneClients  
UNION  
SELECT *  
FROM DivisionTwoClients
```



# New SQL Syntax

- HINT KEY **keynum**
  - In almost all cases, the best key is selected for file I/O
  - Use HINT KEY to force the use of a specific **keynum**

```
SELECT *  
FROM 'Client Master File'  
WHERE ClientID>'200000' OR PhoneNumber<>''"  
HINT KEY 3
```



# PxPlus SQL ODBC Driver Demo

- Excel data visualization
  - Query the data via **SQL ODBC**
  - Use PivotTables and PivotCharts to visualize the data



# Enhanced PxPlus SQL ODBC Driver

- Speed enhancements

- Optimized independent sub-queries
- Optimized access to views with date keys



- Tips to improve speed

- Minimize the amount of work the query has to do
- Always use filters that involve keys, when possible
- Create/Recreate files using
  - 'XK' parameter on
  - Large key blocks **BSZ=31**



# Enhanced PxPlus SQL ODBC Driver

- Easier problem solving

- Improved error messages
- Improved documentation

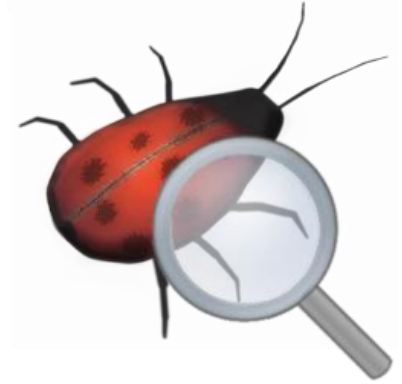
- Reorganized

- New FAQ section:

- [http://manual.pvxplus.com/?odbc/odbc\\_faq.htm](http://manual.pvxplus.com/?odbc/odbc_faq.htm)

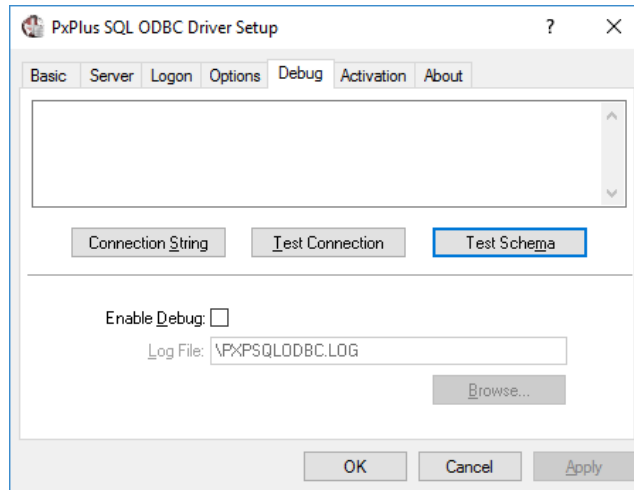
- New examples section:

- [http://manual.pvxplus.com/?odbc/using\\_odbc\\_driver/example\\_sql.htm](http://manual.pvxplus.com/?odbc/using_odbc_driver/example_sql.htm)



# Enhanced PxPlus SQL ODBC Driver

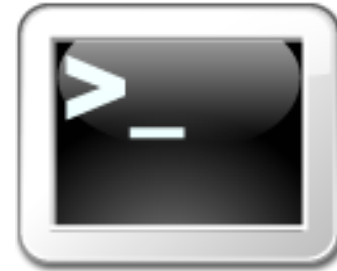
- New Test schema button
  - Tests that it has access to all file and views in the data dictionary
  - Reports an error on the first file or view that cannot be accessed
  - Found in the Data Source Name Setup Debug tab





# Enhanced PxPlus SQL ODBC Driver

- PxPlus SQL Command Line Client enhancements
  - Options
    - **--version**
      - Displays version info
    - **--column-names**
      - Displays column names with output
  - Command
    - LIST **tablename**
      - Returns the tables column info



# Additional Resources

The help link(s) below refer to the current on-line help pages. The functionality may have been further updated since the PxPlus 2016 (version 13) release.

- [SMS Utility](#)
- [Email Utility](#)
- [COM Control](#)
- [FTP Utility](#)
- [PxPlus SQL Server](#) and [PxPlus SQL ODBC Driver](#)

