

# Data Dictionary Maintenance

PxPlus 2017 (v14) & PxPlus 2018 (v15)

**NOTE:** In PxPlus 2023 new Database Export/Import and other utilities were added. Please refer to Additional Resources for the latest on-line help links.

# Data Dictionary Maintenance

## Data Dictionary

- Automatic Data Validation
  - Validation based on element specifications such as Class, Length, Validation and Format
    - Element definitions are analyzed to determine MAX(n), MIN(n), PRC(n), TBL(s\$) and DTE(n) rules
  - Applied when the embedded IOLIST is processed on a WRITE, UPDATE or REC(IOL=) function when OPEN (ch,*IOL=\**)...
  - To turn it on, check the *Force data Validation on WRITE/UPDATE* option on the **Info** tab of **Data Dictionary Maintenance**

**Force data Validation on WRITE/UPDATE**



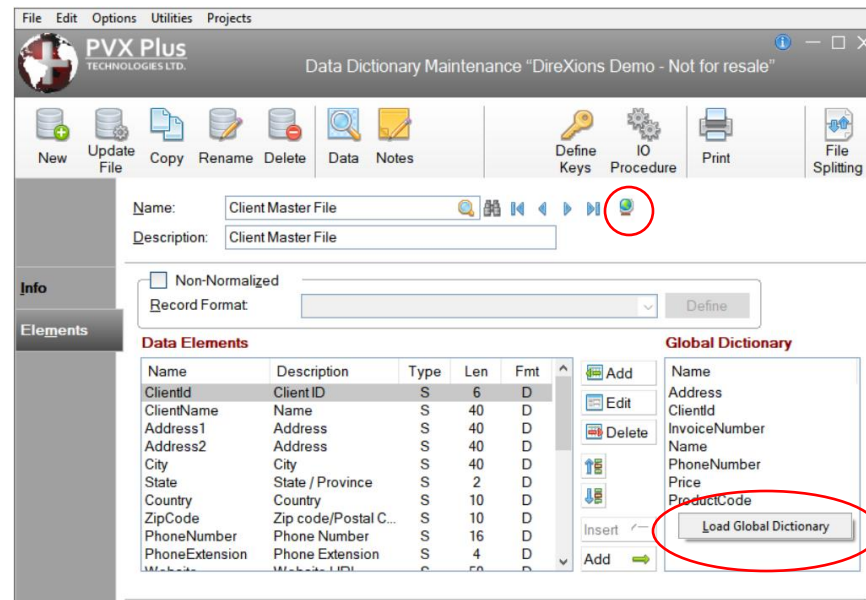
- (Used in conjunction with 'VA' parameter)

# Data Dictionary Maintenance

## Data Dictionary

- Making the {Global Dictionary} easier to use
  - Improved accessibility
    - Browse buttons
    - Right click in Global Dictionary list

2017



Load Global Dictionary

# Data Dictionary Maintenance

## Data Dictionary

- Making the {Global Dictionary} easier to use
  - Easier to update fields
  - Can update an existing Global field from the current Data Element and vice versa if the name is the same

The screenshot displays the 'Data Dictionary Maintenance' interface. On the left, the 'Data Elements' panel contains a table with columns: Name, Description, Type, Len, and Fmt. The table lists various data elements such as ClientId, ClientName, Address1, Address2, City, State, Country, ZipCode, PhoneNumber, and PhoneExtension. On the right, the 'Global Dictionary' panel lists fields: Name, Address, ClientId, InvoiceNumber, Name, PhoneNumber, Price, and ProductCode. A central toolbar contains buttons for Add, Edit, Delete, and Insert. The 'Insert' button, which has a left-pointing arrow, is circled in red. Below the 'Insert' button is another 'Add' button with a right-pointing arrow.

Name	Description	Type	Len	Fmt
ClientId	Client ID	S	6	D
ClientName	Name	S	40	D
Address1	Address	S	40	D
Address2	Address	S	40	D
City	City	S	40	D
State	State / Province	S	2	D
Country	Country	S	10	D
ZipCode	Zip code/Postal C...	S	10	D
PhoneNumber	Phone Number	S	16	D
PhoneExtension	Phone Extension	S	4	D
Website	Website URL	S	50	D

# Data Dictionary Maintenance

## Data Dictionary

- Copy Dictionary

2017

**PVX Plus**  
TECHNOLOGIES LTD.

Copy Data Dictionary

**Copy Data Dictionary From**

Name: Client Master File

Description: Client Master File

**Copy Data Dictionary To**

Name: Client Master 2

Description: Client Master File 2

Physical File:  Fixed  Expression

Copy Elements  Copy Key Definitions

Ok Exit

- Copy the dictionary of *any* file
- New options
  - Change the file *Description*
  - *Copy Key Definitions*
    - Allows you to exclude key definitions

# Data Dictionary Maintenance

## Data Dictionary

2018

- Data Classes
  - Standardized definitions for commonly used file elements

Historically, data classes were used to populate an element definition with standardized settings (e.g. type, size, description, default value, etc.) and associate them with specific control types.

*But what if the settings change?*

Introducing *Dynamic Data Classes* that automatically apply the latest data class settings to control definitions, always keeping them current.

- **For more details see the *Data Class Enhancements PDF***

# Additional Resources

The help link(s) below refer to the current on-line help pages. The functionality may have been further updated since the PxPlus 2018 (version 15) release.

- [Data Dictionary Maintenance](#)
- [Bulk Database Export Utility](#)
- [Database Import Utility](#)
- [Bulk Edit Data Elements Utility](#)
- [Automatic Data Validation](#)
- [Global Dictionary](#)
- [Copy Data Dictionary](#)
- [Data Classes](#)