

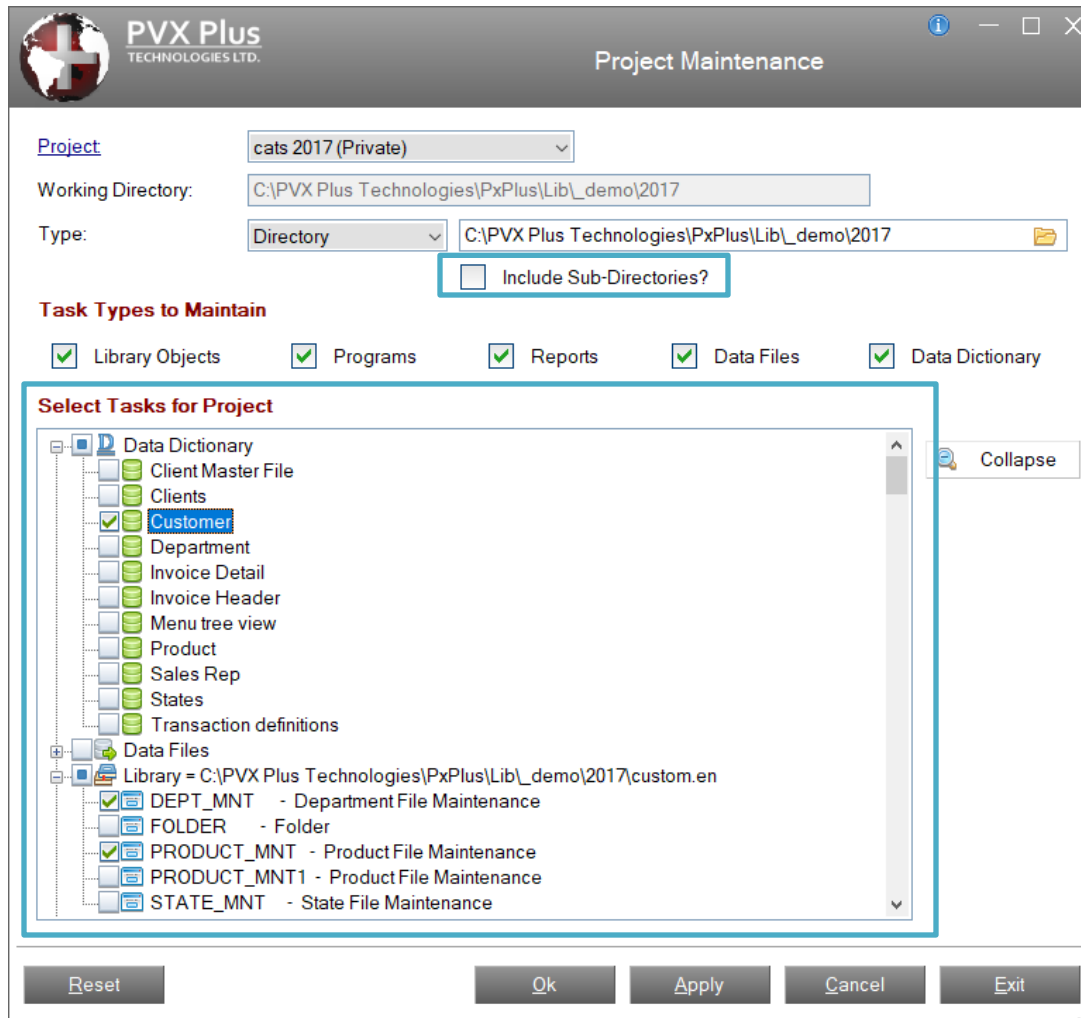
# Projects

PxPlus 2017 (v14) & PxPlus 2018 (v15)

# Projects

- PxPlus 2014 introduced projects
- A project is a collection of tasks - objects, programs and files
- Working directory added to a project
  - Ensures the correct working environment by running any **Start\_Up** program present in the working directory
- Private or Public
- Tasks can be added to a project individually

# Projects



- Add tasks 'en masse' with Project Maintenance (formerly named Maintain Projects Utility)
- Added option to 'Include Sub-Directories'



# Projects

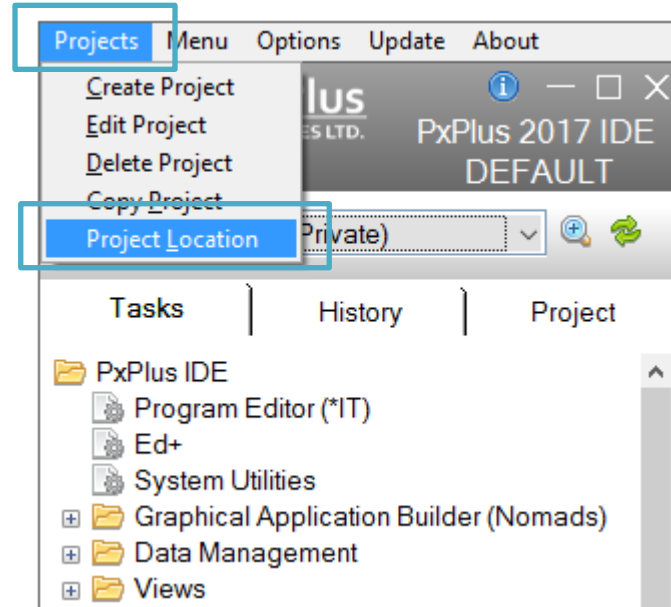
- Projects are supported by two files
  1. wkids.dat
  2. wkseq.dat
- Reside in the \*plus/proj directory
- Projects had to be created again with each new release
- Ability to move to projects to a new location
- Option to retain location on a new release

2017

**NOTE:** As of PxPlus 2023, project information is no longer retained in wkids.dat and wkseq.dat. Please refer to Additional Resources for the latest on-line help links.

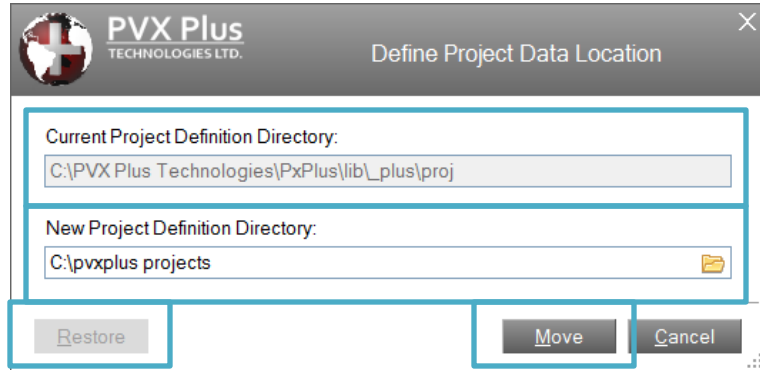
# Projects

- Accessed from the Project menu of the IDE menu bar
- Project Location



**NOTE:** As of PxPlus 2023, Project Location menu item is no longer available. Please refer to Additional Resources for the latest on-line help links.

# Define Project Data Location



- Simple dialog to enter new project location
- Displays current project location
- Entry of new project location
- Once moved it creates link files in \*plus/proj and updates NOMADS.ini file
- Restore will move projects files back to original default location

**NOTE:** As of PxPlus 2023, Define Project Data Location dialog is no longer available. Please refer to Additional Resources for the latest on-line help links.

# Recap

- Project Locations
  - Maintains your locations from release to release

# Additional Resources

The help link(s) below refer to the current on-line help pages. The functionality may have been further updated since the PxPlus 2018 (version 15) release.

- [Projects & the IDE](#)
- [Adding Tasks to Project](#)
- [Project Maintenance](#)