

Using Library Bulk Edit Utility

PxPlus 2017 (v14) & PxPlus 2018 (v15)

Library Bulk Edit

2017

- Similar to Panel Bulk Edit in NOMADS designer
- Allows changes to controls by panel and by library
 - Speeds up development time
 - Select panels or type of controls to change
 - Changes done in a more consistent manner
- Even greater functionality
 - Change panel headers properties
 - Change library defaults properties

2017
Online
Update 2

Library Bulk Edit

- Accessing Library Bulk Edit

Location	Item	Options
IDE	Graphical Application Builder (Nomads)/Utilities	Ability to enter Directory or Library
NOMADS	Utilities Menu	Ability to enter Directory or Library
Library Object Selection	Utilities Menu	Only the current NOMADS library is available for edit

Using Library Bulk Edit

- Four main areas

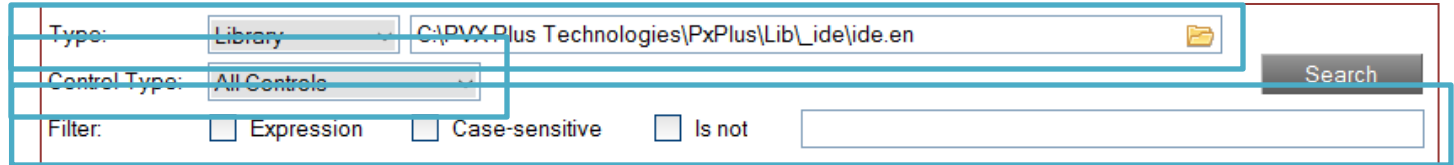
The screenshot shows the PVX Plus Library Bulk Edit application window. The interface is divided into several sections:

- What to Edit:** Located at the top right, this area contains the search and filter controls. It includes a 'Type' dropdown set to 'Library', a file path 'C:\Biz-Apps\orig\prog\gl\gl_account.en', a 'Control Type' dropdown set to 'All Controls', and checkboxes for 'Expression', 'Case-sensitive', and 'Is not'. A 'Search' button is also present.
- Control Selection:** Located on the left side, this area displays a tree view of the selected controls. The tree shows a folder structure starting with 'C:\Biz-Apps\orig\prog\gl\gl_account.en' and 'DMAINT:1:Accounting'. Several controls are selected, including 'ACCOUNTCATEGORYRID', 'ACCOUNTGROUPRID', 'BOXES_1', 'BOXES_2', 'FONTED_TEXT_1', 'FONTED_TEXT_2', 'FONTED_TEXT_3', 'MAINACCOUNTNO', 'MAINSEGMENTDESC', 'TITLE_1', 'TITLE_10', 'TITLE_2', 'TITLE_3', 'TITLE_4', and 'TITLE_5'. Below the tree are 'Collapse', 'Reset', and 'Select All' buttons.
- Properties To Edit:** Located on the right side, this area displays a table of properties for the selected controls. The table has two columns: 'Property' and 'Value'. The properties are grouped into sections: 'Events', 'Coordinates', and 'Display'. The 'Events' section includes properties like 'Background Loading', 'Load On Demand', 'On Change', 'On Focus', 'Post Create', and 'Prior Create'. The 'Coordinates' section includes 'Height' and 'Width'. The 'Display' section includes 'Empty Value', 'Frame Type', 'Implied Decimal', 'Initial Value', and 'Input Format'. A 'Clear Properties' button is located at the bottom right of this section.
- Panel Completion Buttons:** Located at the bottom right, this area contains the 'Ok', 'Apply', 'Clear', and 'Exit' buttons.

A yellow warning banner at the bottom left of the application window states: 'Panel changes cannot be reversed. Ensure a proper backup exists.'

Library Bulk Edit

What to Edit



The screenshot shows a search interface with the following elements:

- Type:** A dropdown menu set to "Library" and a text input field containing "C:\PVX Plus Technologies\PxPlus\Lib_ide\ide.en".
- Control Type:** A dropdown menu set to "All Controls".
- Filter:** Three checkboxes: "Expression" (unchecked), "Case-sensitive" (unchecked), and "Is not" (unchecked). A text input field is positioned to the right of these checkboxes.
- Search:** A grey button labeled "Search" is located to the right of the text input field.

- Type
 - Library (single library)
 - Directory (multiple libraries)
 - Select sub directories
 - Multiline with browse option
- Control Type
 - All controls
 - Individual control types
 - Panel header
 - Library defaults
- Filter
 - String value for search
 - Case sensitive
 - "Is not" capability
 - Expression



2018



2017
Online
Update 2

Library Bulk Edit

- Filter examples

Type: Library C:\PVX Plus Technologies\PxPlus\Lib\ ide\ide.en

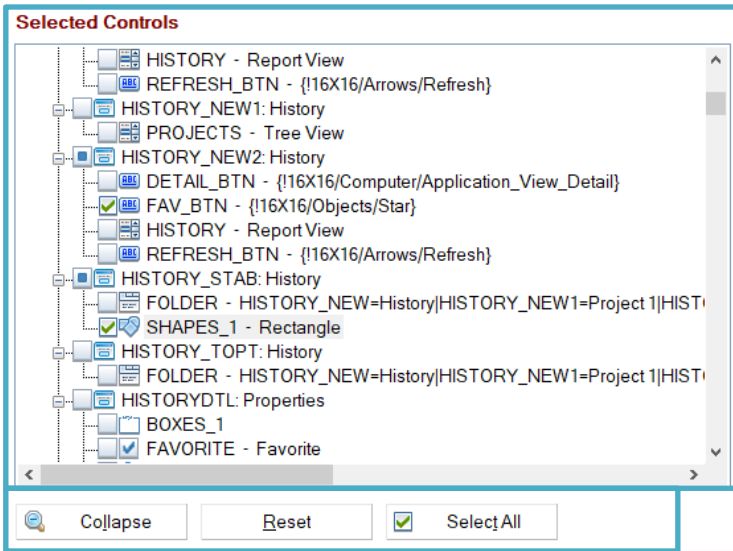
Control Type: All Controls Search

Filter: Expression Case-sensitive Is not

Control Type	Expression	Case Sensitive	Is Not	Search Value	Findings
All	No	Yes	No	BT_	All controls with uppercase BT_
Button	No	No	No	{!	All Button controls with bitmaps
Button	No	No	Yes	{!	All Button controls with no bitmaps
Multi-Line	Yes	N/A	N/A	POS("L"=_OBJ_ST\$)	All Multi-line controls with the Locked attribute set
Fonted Text	Yes	N/A	N/A	_OBJ_VISUAL_CLASS\$<>"CUST"	All Fonted Text controls not using the CUST visual class

Library Bulk Edit

Selected Controls



- Selected Controls
 - Displays all controls matching filter values entered
 - Sorted by library and panel name
 - Bitmaps used to show control type
 - Displays control names
 - Checkbox to select controls, panel or entire library
 - Right click to access panel or library in Nomads designer (PxPlus 2018)
 - Added more detail about the control (PxPlus 2018)
- Collapse/Expand toggle
- Reset
- Select All/Deselect All toggle

Library Bulk Edit

Properties to Edit

Property	Value	
Events		
Background Loading	As is	...
Load On Demand	As is	...
On Change	As is	...
On Focus	As is	...
Post Create	As is	...
Prior Create	As is	...
Coordinates		
Height	As is	
Width	As is	
Display		
Implied Decimal	As is	▼
Input Format	As is	...
Input Length	As is	...

Clear Properties

Properties to Edit

- Same grid as Panel Bulk Edit Utility
- Only lists properties for selected control type
- Tool tip displays variable name in PxPlus 2018



Clear Properties button

- Clears all changes made to property grid

Library Bulk Edit

Panel Completion Buttons

- Ok button
 - Process changes and exits utility
- Apply button
 - Process changes
 - Does not clear screen values
 - Allows users to continue with more changes
- Clear button
 - Clears all screen values
 - Starts over without exiting



Recap

- Library Bulk Edit
 - Quickly change controls, panels and library defaults properties
 - Filtering helps narrow down changes
 - Easy to apply to individual or multiple - controls, panels or library defaults

Additional Resources

The help link(s) below refer to the current on-line help pages. The functionality may have been further updated since the PxPlus 2018 (version 15) release.

- [Library Bulk Edit](#)