

Nomads Controls Enhancements

PxPlus 2019 (v16)

Panels

Nomads Controls

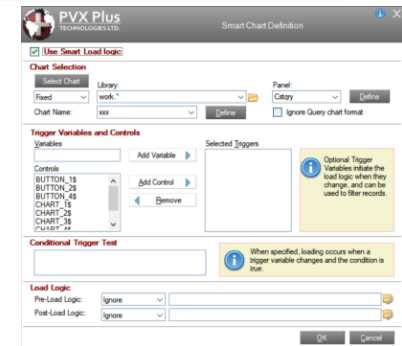
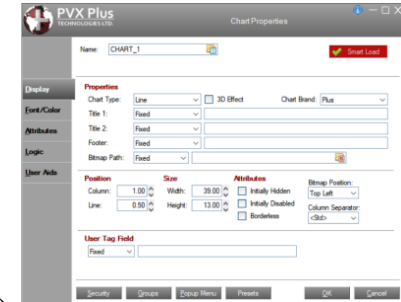
- Global setting to **suppress persistence** on panels with **relative location** settings:
 - Set **%nomads'RelPnl_Suppress_Persistence**
 - Settings:
 - 0 = Panel persistence is not suppressed (default)
 - 1 = Suppress panel persistence (location & size)
 - 2 = Suppress location persistence only (panel size persists)

Position

Relative

Column: 13

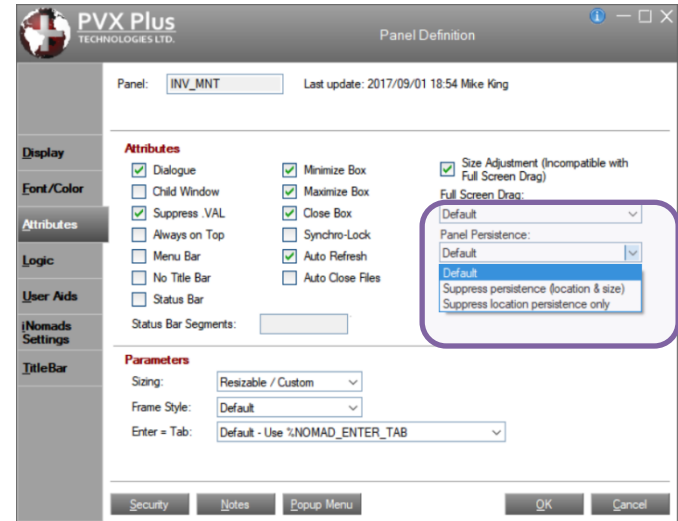
Line: 8



Panel Header

NOMADS Controls

- Panel Header option to **suppress Panel Persistence** for panel
 - **Panel Persistence** option on Attributes tab
 - Settings:
 - Default (based on
 - %nomads'Panel_Info_Prog\$ and %nomads'RelPnl_Suppress_Persistence)
 - Suppress persistence (location & size)
 - Suppress location persistence only

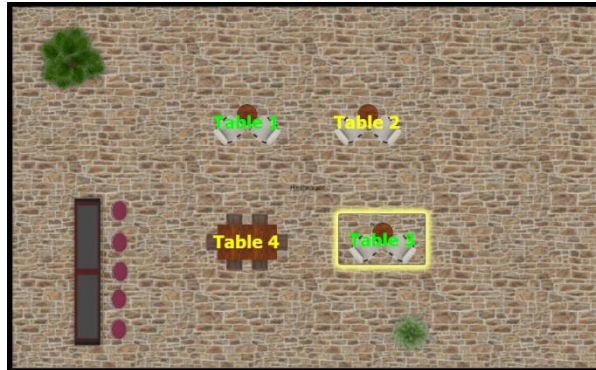
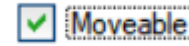


Buttons

NOMADS Controls

- **Moveable** Attribute

- Button can be moved by dragging it with the mouse
- Relocation not persistent
 - i.e. Buttons will return to their original positions when the panel is next invoked or resized



More at [Spritin up your Application PDF](#)

Buttons, Checkboxes, Radio Buttons

NOMADS Controls

- New **Center/Scale Bitmap Alignment** and **Scale Bitmap** options on the Display tab
 - Bitmap scaled and centered in button
 - Centered text overlays bitmap
 - '4D' mode only

Alignment: Scale bitmap



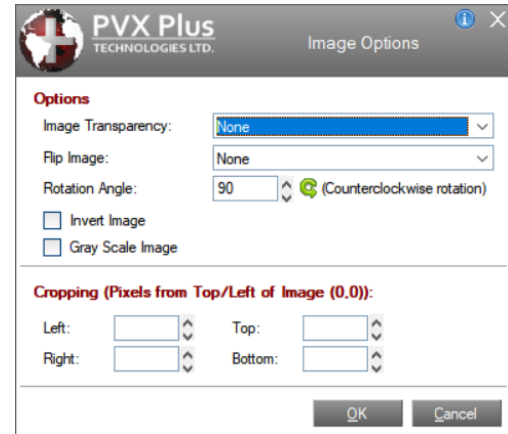
Top, Bottom and Center/Scale alignments and the Scale Bitmap option only work in 4D mode.



Buttons, Checkboxes, Radio Buttons

NOMADS Controls

- New **Bitmap Image** options:
 - Image Transparency
 - Flip Image - horizontally, vertically, both
 - Rotation Angle (0-360 degrees)
 - Invert Image
 - Gray Scale Image
 - Cropping

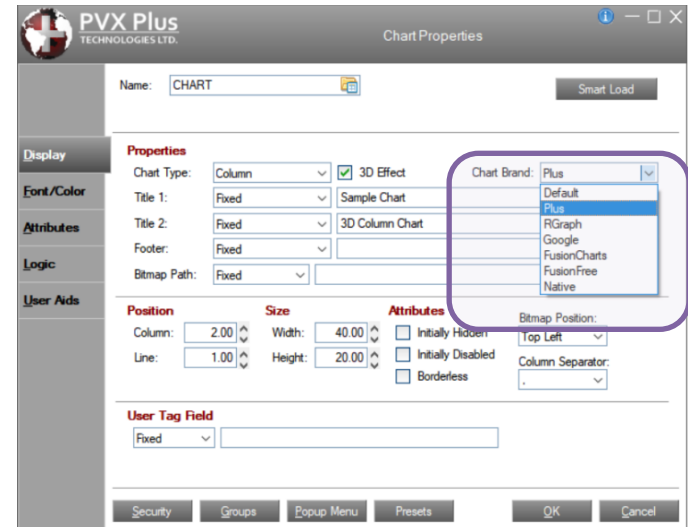


Note: Image Transparency and Cropping are not supported in *iNomads*

Charts

NOMADS Controls

- **Chart Brand** setting on Display tab
 - Override setting in %nomads'Chart\$
 - Settings:
 - Default (from %nomads'Chart\$)
 - Plus
 - RGraph
 - Google
 - FusionCharts
 - FusionFree
 - Native
- Added **iNomads Class** setting on Font/Color tab

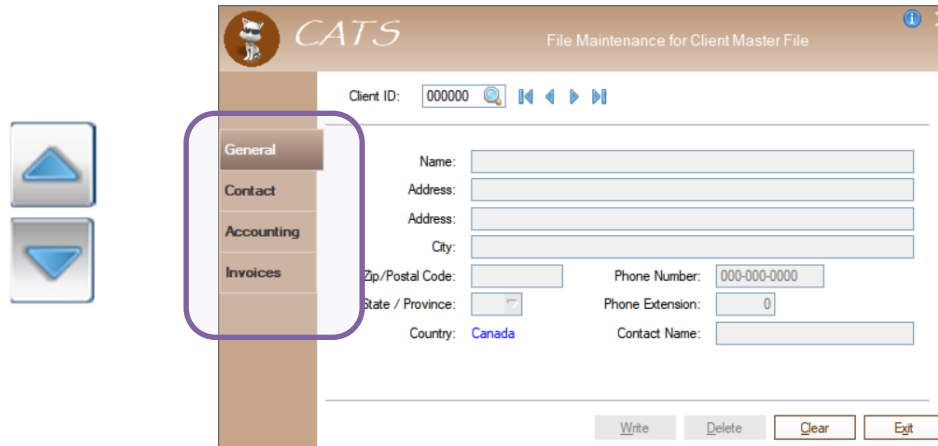


More information in the
Charting 101 and **Smart Charts** PDFs

Folders

NOMADS Controls

- Folder Navigation
 - Added support for PageUp / PageDown arrows to navigate through **SideBar** folders when focus is on the tab.



Grid

NOMADS Controls

- New Presets Properties:
 - **LockTop** – Number of rows at the top of the grid to be excluded from sorting
 - **ShowLocked** – Grid-level property
 - 0 = Color of locked cells does not change BackHilight colors
 - 1 = Locked cells have grayed background (default)
 - **Lock** – Option “2” – Locks the cell but allows input-style selection

Client ID	Name	Balance	Credit Limit	CR	Credit Used
032475	Brewster Lighting	2,126.60	1,000	Y	212.66%
033994	Jackson Formal Rentals	1,768.73	1,000	Y	176.87%
034538	Grayson Nursery	2,264.93	2,000	Y	113.25%
038024	Burleson Construction	3,334.91	1,000	Y	333.49%
039816	Williamson Roofing	1,663.93	1,000	Y	166.39%
041264	Lipscomb Securities	3,955.29	1,000	Y	395.53%
047847	Kimble Wedding Services	66.11	1,000	N	6.61%
065853	Wheeler Laundromat	2,143.33	1,000	Y	214.33%
067520	Kimble Snackbar	2,606.07	2,000	Y	130.3%
069944	Moore Seafood and Steaks				164.42%

'Lock=1
'ShowLocked=1

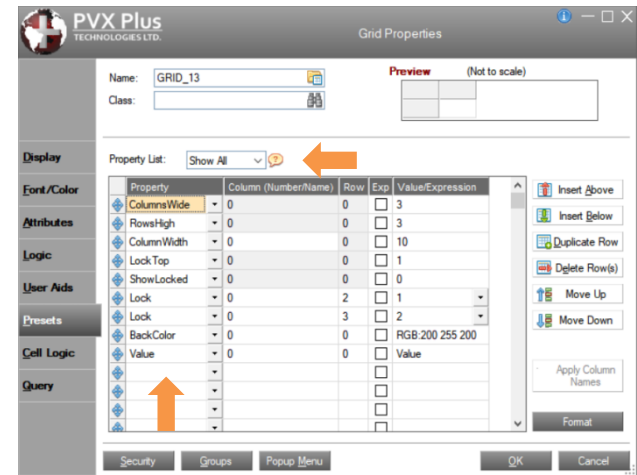
Client ID	Name	Balance	Credit Limit	CR	Credit Used
032475	Brewster Lighting	2,126.60	1,000	Y	212.66%
033994	Jackson Formal Rentals	1,768.73	1,000	Y	176.87%
034538	Grayson Nursery	2,264.93	2,000	Y	113.25%
038024	Burleson Construction	3,334.91	1,000	Y	333.49%
039816	Williamson Roofing	1,663.93	1,000	Y	166.39%
041264	Lipscomb Securities	3,955.29	1,000	Y	395.53%
047847	Kimble Wedding Services	66.11	1,000	N	6.61%
065853	Wheeler Laundromat	2,143.33	1,000	Y	214.33%
067520	Kimble Snackbar	2,606.07	2,000	Y	130.3%
069944	Moore Seafood and Steaks				164.42%

'Lock=2
'ShowLocked=0

Grid

NOMADS Controls

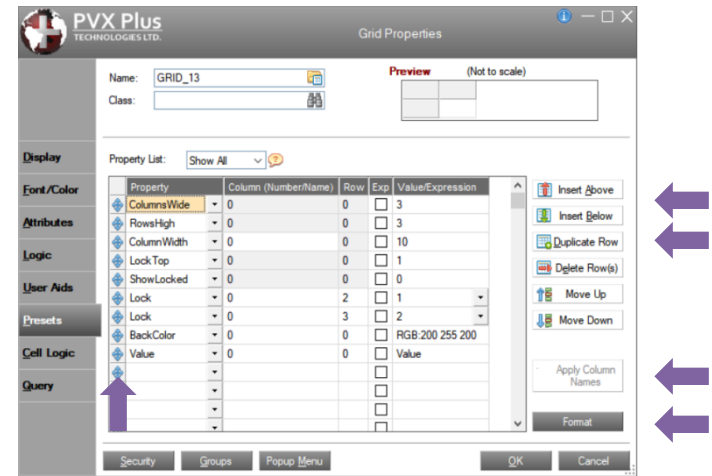
- New Grid Presets features:
 - Filter the **Property List** by property type:
 - Show All
 - General
 - Cell
 - Row
 - Column
 - Right-click **Property** selection by property category:
 - Contents
 - Display/Color
 - Formatting
 - Grid
 - Interface
 - Layout
 - Misc.



Grid

NOMADS Controls

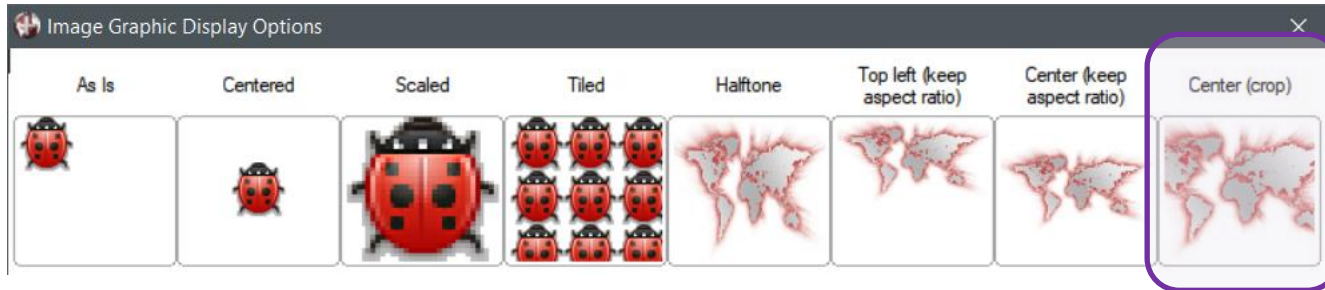
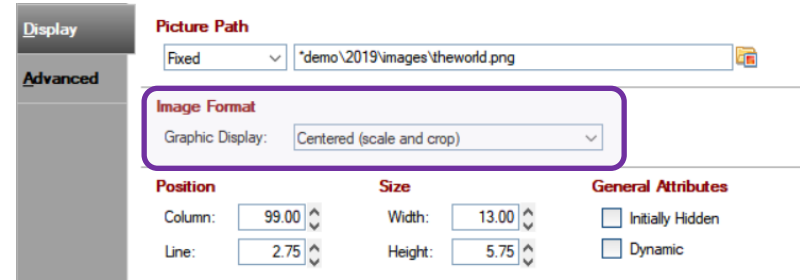
- New Grid Presets features:
 - Insert a new row above or below the current row
 - Create a duplicate of the current row and insert below
 - Rearrange rows using drag and drop
 - Replace column number settings with column names
 - New **Format** button to launch Grid Format Definition dialog



Images

NOMADS Controls

- New Graphic Display option
 - Centered (scale and crop)



Listboxes

NOMADS Controls

- New Attributes:
 - **Lock Top Rows**
 - Number of rows at the top of the Listbox to be excluded from sorting
 - **Center Text Vertically**
 - Select to center text vertically in the Listbox row when **Lines Per Row is > 1**
 - Text that exceeds the column width is truncated and an ellipsis (...) is displayed
 - When not selected (Default), text is aligned to the top of the Listbox row, and text that exceeds the column width is word wrapped

Centered			
Client ID	Name	City	Prov
032475	Brewster Lighting	Methlakahtla	BC
033994	Jackson Formal Re...	Langruth	MB
034538	Grayson Nursery	Reading	NS
038024	Burleson Constructi...	Elsanor	MB

Not Centered			
Client ID	Name	City	Prov
032475	Brewster Lighting	Methlakahtla	BC
033994	Jackson Formal Rentals	Langruth	MB
034538	Grayson Nursery	Reading	NS
038024	Burleson Construction	Elsanor	MB

Menu

NOMADS Controls

- **Delete** key enabled to delete items from menu contents
- Added **Merge-Jumpto** function to Item/Group definition
 - Process a concurrent panel
- Menu Item/Group/Link **Bitmaps** attribute assignment
 - Bitmap to appear to left of text
 - Can now assign Normal and Checked bitmaps as **expressions**

Item/Group

Item: &5. Maintenance

Function: Merge-Jumpto "cstmaint", "work"

Item State: Show Item Include Line Separator (line appears below menu item)

Bitmaps (Preview may not be to scale)

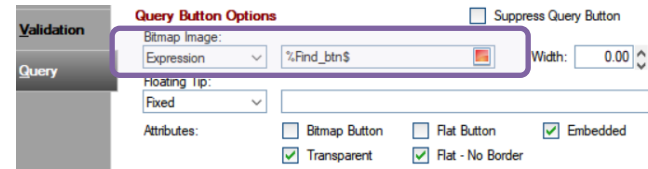
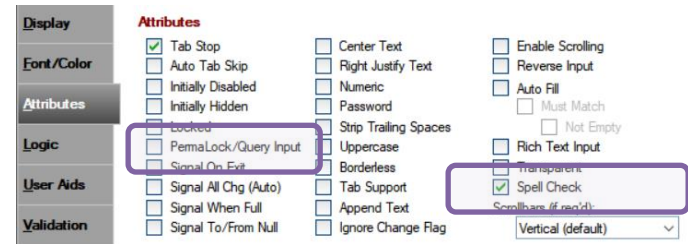
Normal: Expression mnu_unchecked\$

Checked: Expression mnu_checked\$

Multi-Lines

- **Spell Check** attribute added
 - Enable spell checker for the Multi-Line
 - If *off*, the system-wide setting in ‘OPTION’(“AutoSpellCheck”) is used
- **Permalink** Multi-Line with query
 - Transfer Multi-Line hotkey to query button
- Query Bitmap assignment
 - Can now assign **Bitmap Image** as an **expression**
 - Also added to grid cell Query Preset definition

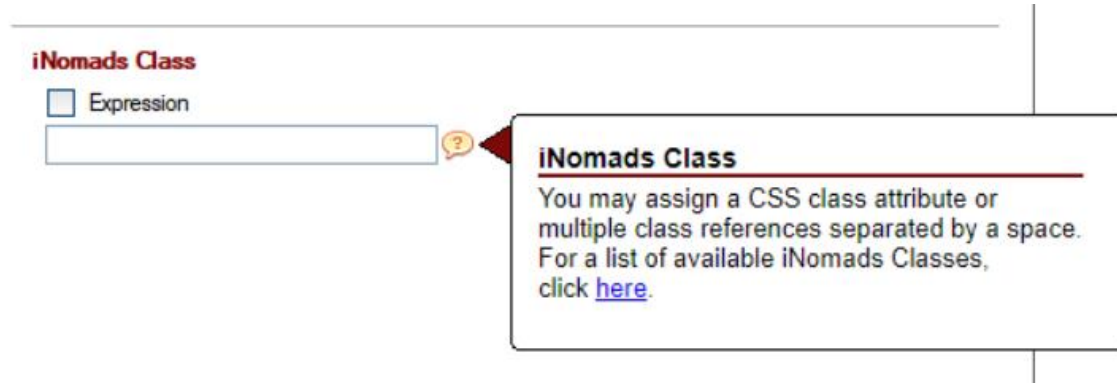
NOMADS Controls



Fixed Text and Scrollbars

NOMADS Controls

- Added *iNomads Class* setting for less common control types
 - Fixed Text – In Font/Color tab
 - Vertical & Horizontal Scrollbars – In Display tab



Extended Controls

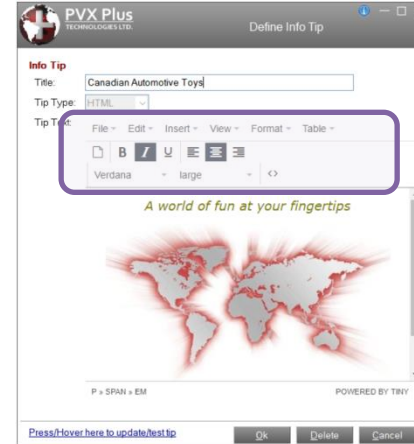
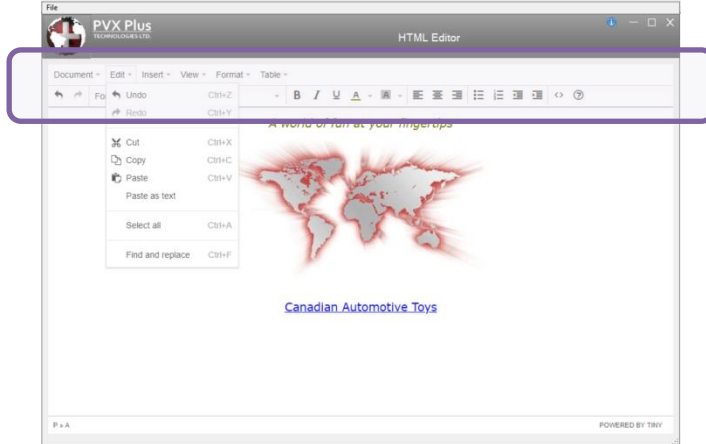
NOMADS Controls

- **TinyMCE HTML Editor**

- Updated to version 4.9.2
- Two new layouts using menu, buttons, and drop boxes

Modern (returns HTML code for full page)

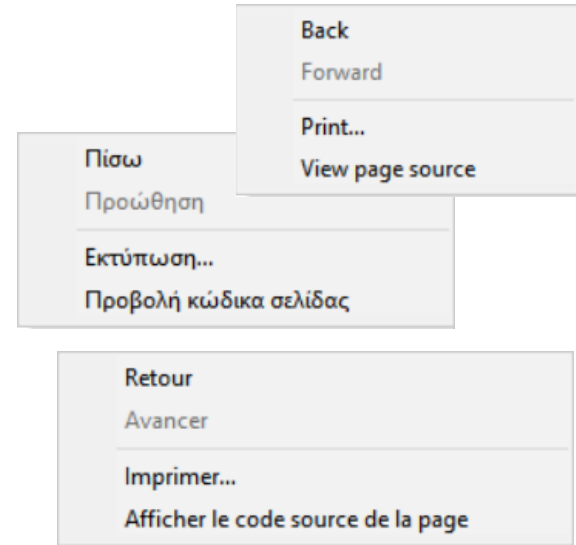
Narrow (returns HTML code snippet)



Extended Controls

- ***Browser**
 - **Multi-lingual support** added
 - Display websites, menus, etc. in a specified language
 - Based on the Windows user language
 - Override using:
 - PxPlus INI file [Config] section
 - BrowserLang=LanguageCode
 - ‘OPTION’(“BrowserLang”,LanguageCode\$)
 - Overrides INI settings
 - Set when browser first instantiated, cannot be reset

NOMADS Controls



Custom Title Bar Controls

NOMADS Controls

- Automatically set up logic for special title bar controls:

PX_TitleBar_SysMenu	(System menu button)
PX_TitleBar_Caption	(Panel caption)
PX_TitleBar_Min	(Panel minimize button)
PX_TitleBar_Max	(Panel maximize button)
PX_TitleBar_Close	(Panel close button)



- Leave **Logic** settings blank, and NOMADS will handle the logic automatically

Additional Resources

The help link(s) below refer to the current on-line help pages. The functionality may have been further updated since the PxPlus 2019 (version 16) release.

- [Panel Header](#)
- [Button Control](#)
- [Check Box Control](#)
- [Radio Button Control](#)
- [Chart Control](#)
- [Folder Control](#)
- [Grid Control](#)
- [Image Control](#)
- [List Box Control](#)
- [Menu Bar](#)
- [Multi-Line Control](#)
- [Fixed Text Control](#)
- [Scrollbars](#)
- [TinyMCE HTML Editor](#)
- [*Browser](#)
- [Custom Title Bars](#)