

Query+ Enhancements

PxPlus 2019 (v16)

Agenda

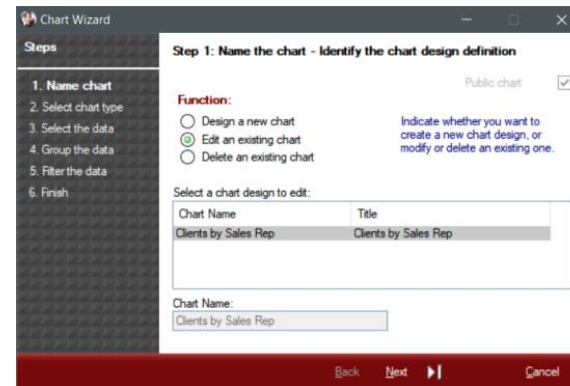
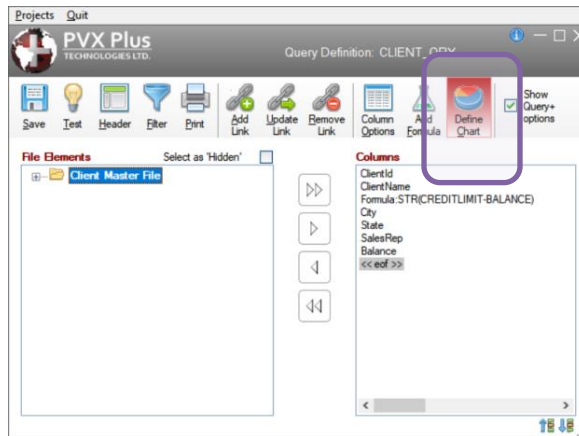
- New Features and Options
- Query Profiles
- Performance
- Query Web Service

NEW FEATURES AND OPTIONS

AutoChart Access

New Features and Options

- Easier access to AutoChart Chart Wizard
 - **Define Chart** button added to Query Definition toolbar
 - Create public **AutoChart** definitions that can be used to generate and load data into a **Smart Chart**



Suppress Panel Persistence

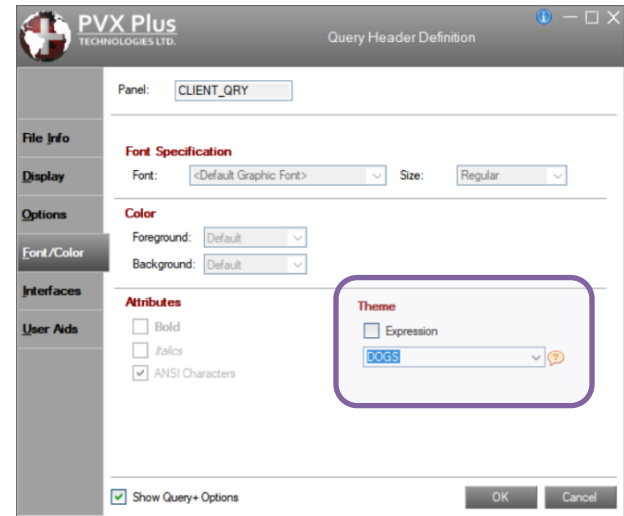
New Features and Options

- Suppress Panel Persistence on Queries
 - Query will appear where originally defined
 - Set `%nomads'Query_Suppress_Persistence`
 - Settings:
 - 0 = Do not suppress persistence
 - If persistence set by `%nomads'Panel_Info_Prog$="*winpnl"`
 - 1 = Suppress persistence
 - Location/size of query will be the original location/size
 - 2 = Suppress location persistence
 - Location will be original location, but size will persist if changed
 - Applicable to both Query+ and Classic queries

Theme Support

- Specify a theme for the individual query on the Font/Color tab of the Query Header
- Hierarchy for the query theme is:
 - Query theme takes precedence
 - If no query theme, then the Panel Header theme is used
 - If no query or panel theme, then the Library Defaults theme takes effect
 - If none of the above, then the global theme (%nomads'Theme\$) is used
 - In all cases, %nomads'ThemeOverride\$ will override all theme settings

New Features and Options

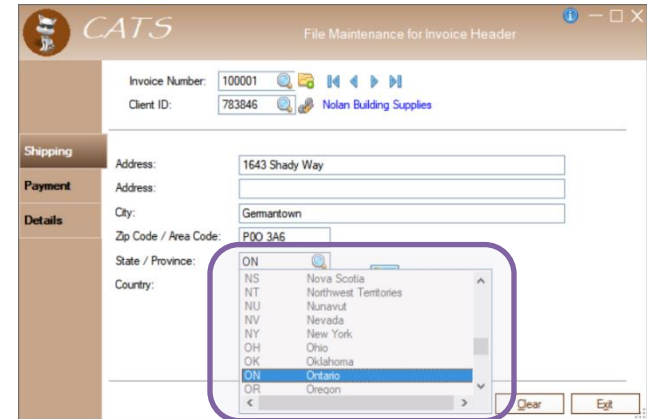


Query+ Options

New Features and Options

- Suppress Column Header buttons on a Drop Query
 - Make the Drop Query resemble a Drop Box more
 - Deploy globally:
 - Set `%nomads'Query_NoDropHeader=1`
 - For a specific query:
 - Set **No Drop Query Header** option in the Query Header on the Options tab
 - Options are:
 - Default - uses the setting in `%nomads'Query_NoDropHeader`
 - Always
 - Never

No Drop Query Header:
Always



Query+ Options

New Features and Options

- **Auto Column Resize**
 - Automatically adjusts the sizes of the columns to fit the width of the query
 - Deploy globally:
 - Set `%nomads'Query_AutoColSize=1`
 - For a specific query:
 - Set **Auto Column Resize** option in the Query Header
 - Options are:
 - Default - uses the setting in `%nomads'Query_AutoColSize`
 - Always
 - Never

Auto Column Resize:

Always

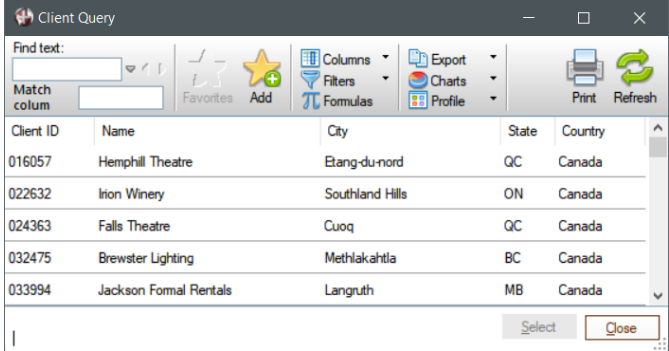
Client ID	Name	Sta	City	Prov	Rep	Balance
016057	Hemphill Theatre	✓	Elang-du-nord	QC	RL	1,170.13
022632	Iron Winery	✓	Southland Hills	ON	DK	403.41
024363	Falls Theatre	✓	Curoq	QC	RL	0.00
032475	Brewster Lighting	✓	Methakakilla	BC	PG	0.00
033994	Jackson Formal Rentals	✓	Langruth	MB	PG	0.00
034538	Grayson Nursery	✓	Reading	NS	BT	0.00
038024	Burleson Construction	✓	Elsanor	MB	CM	557.94
038588	Clay Medical Center	✓	Westoe	SK	PG	127.60
039816	Williamson Roofing	✓	Pipetstone	MB	PG	403.98
041264	Lipscomb Securities	✓	Scotts Level	ON	BM	0.00
047847	Kenble Wedding Services	✓	Sombra	ON	HK	977.45
054703	Crane Dental Offices	✓	Hollcott Crossing	NL	AN	0.00

Client ID	Name	Sta	City	Prov	Rep	Balance
016057	Hemphill Theatre	✓	Elang-du-nord	QC	RL	1,170.13
022632	Iron Winery	✓	Southland Hills	ON	DK	403.41
024363	Falls Theatre	✓	Curoq	QC	RL	0.00
032475	Brewster Lighting	✓	Methakakilla	BC	PG	0.00
033994	Jackson Formal Rentals	✓	Langruth	MB	PG	0.00
034538	Grayson Nursery	✓	Reading	NS	BT	0.00
038024	Burleson Construction	✓	Elsanor	MB	CM	557.94
038588	Clay Medical Center	✓	Westoe	SK	PG	127.60
039816	Williamson Roofing	✓	Pipetstone	MB	PG	403.98
041264	Lipscomb Securities	✓	Scotts Level	ON	BM	0.00
047847	Kenble Wedding Services	✓	Sombra	ON	HK	977.45
054703	Crane Dental Offices	✓	Hollcott Crossing	NL	AN	0.00
056553	Wheeler Laundromat	✓	Basset	ON	DK	899.20

Query+ Options

- **Center Text Vertically**
 - Centers text vertically in the row when the row is greater than one line high
 - Text that exceeds the width of the column is truncated and displayed with an ellipsis (...)
 - Default – Align text to top of row with word-wrap
 - When an image is used in the query, the setting is ignored and all text is centered vertically
 - The **Center Text Vertically** option has been added to the Display tab of the Query Header Definition

New Features and Options

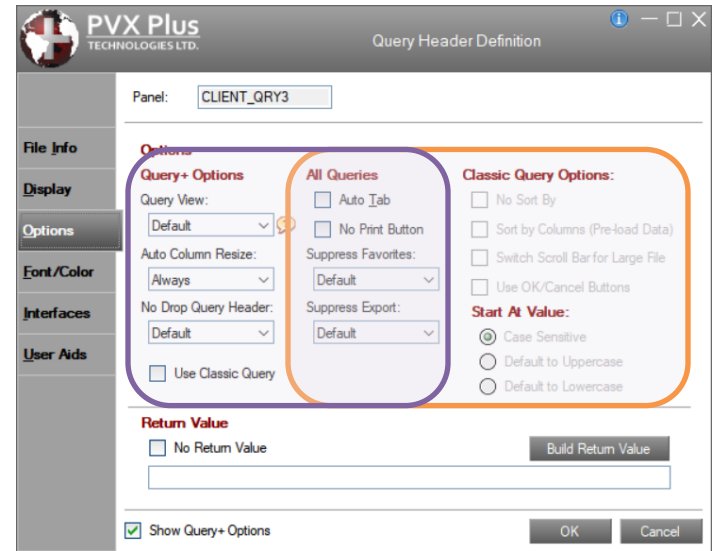


Client ID	Name	City	State	Country
016057	Hemphill Theatre	Etang-du-nord	QC	Canada
022632	Iron Winery	Southland Hills	ON	Canada
024363	Falls Theatre	Cuoq	QC	Canada
032475	Brewster Lighting	Methlakahtla	BC	Canada
033994	Jackson Formal Rentals	Langruth	MB	Canada

Reorganized Header Definition

New Features and Options

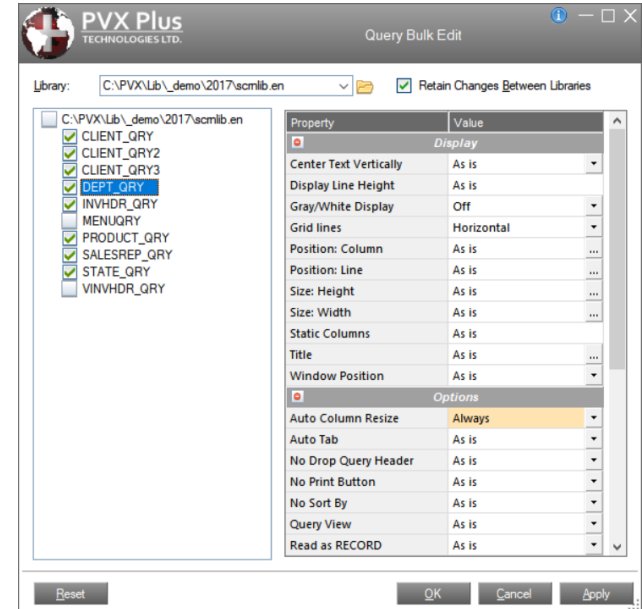
- Reorganized the layout of the **Options** tab
 - Separated Query+ options from Classic Query options
 - Reworked the enabling/disabling of options on the Options tab based on Classic vs Query+
- Moved the **Gray/White Display** option from Options to Display tab
- Removed the redundant **Database Connect Option** from Options tab



Query Bulk Edit Utility

- Updated with the latest options
- An easy way to apply new options to multiple queries in a panel library
- Accessed from:
 - Library Object Selection Utilities menu
 - IDE - Graphical Application Builder (Nomads) Utilities menu

New Features and Options



QUERY PROFILES

Definition

Query Profiles

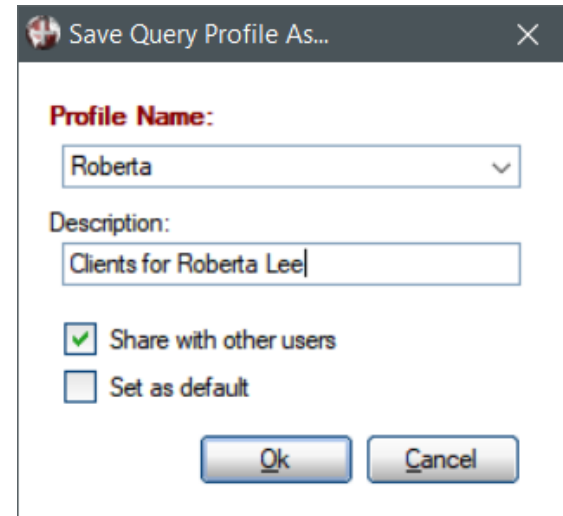
- A **Query Profile** is a collection of run-time settings that has been applied to a query by an end user
- Settings consist of:
 - Column settings
 - Order
 - Width
 - Hide/Show
 - Column filters
 - User-defined formulas
- Settings can be saved with a name and recalled at a later time



Saving Query Profiles

Query Profiles

- **Save / Save As** options available in **Profile** group of the query popup menu or **Profile** button
- Profile names must be unique to the particular query and user
- Each user can create up to 10 profiles per query
- Share your profiles with others



Save Query Profile As...

Profile Name:
Roberta

Description:
Clients for Roberta Lee

Share with other users
 Set as default

Ok Cancel

Saving Query Profiles

Query Profiles

- What is saved and when...
 - Column and filter information is saved automatically if the [Save Column Settings](#) and [Save Filters](#) items in the Column and Filters menus are checked
 - If checked, settings are saved when leaving the profile
 - If not checked, you must [Save](#) from the Profile menu
 - User formulas are saved when created and edited
 - Settings can be inherited by saving an existing profile with a new name

Recalling Query Profiles

Query Profiles

- Two ways to load a profile:
 - Load an existing profile from the profile list at the bottom of the **Profile** menu
 - Recall a profile from the **Load a Profile** interface
 - Displays the contents of the highlighted profile
 - Also displays shareable profiles
 - Can be selected and saved as your own

The image shows two screenshots from a software application. The top screenshot is a 'Load a Profile' dialog box with a menu. The menu items are: Load profile, Save profile, SaveAs, Delete profile, Set current profile as default, Reset current profile to standard settings, Export Profile, and Import Profile. Below the menu is a list of profiles: 0. "Main" <Default>, 1. Ann (checked), 2. Ontario, and 3. Roberta. The bottom screenshot is a window titled 'Jane - Ann (Clients for Anne Nelson)'. It contains a table with columns 'User', 'Profile', and 'Description'. The table data is as follows:

User	Profile	Description
Jane	"Main"	
Jane	Ann	Clients for Anne Nelson
Jane	Ontario	Clients from Ontario, CA
Jane	Roberta	Clients for Roberta Lee

Below the table is a section titled 'Jane - Ann (Clients for Anne Nelson)' with a table of columns and their widths and hidden status:

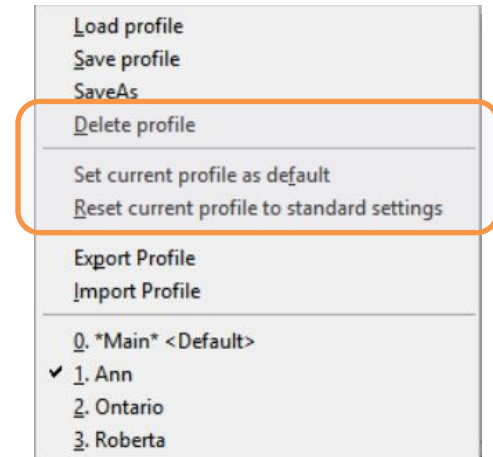
Columns	Width	Hide
Client ID	10	
Name	25	
Sts	4	
City	17	
Prov	6	
Rep	6	✗
Sales Rep Name	7	✗
Balance	10	

At the bottom of the window, there are buttons for 'Save', 'Load', and 'Cancel'. A filter is shown: 'Filter=SalesRep is equal to AN'.

Other Functionality

- **Delete**
 - Delete the specified profile
- **Set the current profile as default**
 - The default profile is used when the query is invoked
- **Reset current profile to standard settings**
 - Restore the settings to those of the original query definition

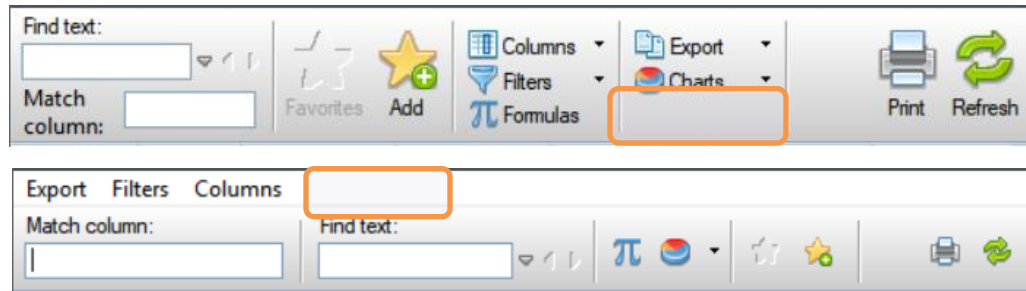
Query Profiles



Suppressing Profiles

Query Profiles

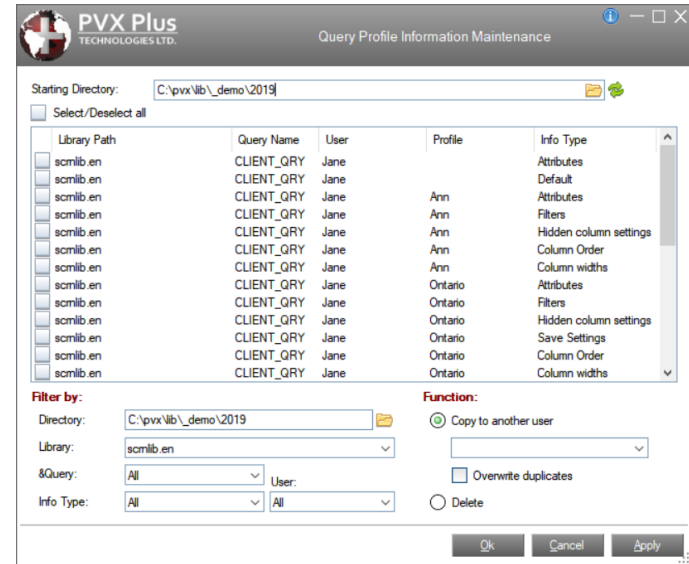
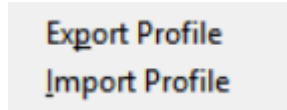
- Exclude the **Profile** menu group from the query popup menu and toolbar
 - Add “P” to the value of the `%nomads'Query_Suppress_Popup$`
 - Example
 - `%nomads'Query_Suppress_Popup$="PGU"`
Would suppress **Profile**, **Graphs/Charts** and **User Formulas** on the menu and toolbar



Profile Maintenance Utilities

Query Profiles

- Updated to handle named profiles
 - Includes:
 - **Export/Import** options on Profile menu
- **Query Profile Information Maintenance** utility on NOMADS and Library Object Selection Utilities menus



Respect the End-User Data

Query Profiles

- `query.inf` file
 - Profile data is stored in `query.inf` files in the directory where the screen library is located

Warning:

These files contain data created by the end user, so be careful *not* to include these files in your application installs, or you will overwrite the user's data.

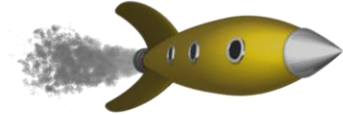


PERFORMANCE

Performance Enhancements

Performance

- Background Loading – for Filtered Data
 - Implemented **LoadPoint** logic to load blocks of records into the query
 - Used to load one record at a time
- Load-On-Demand – for Unfiltered Data
 - When **Start Value** specified, implemented use of RNO() function for starting record to position the load
 - Previously Background Load mode was used when Start Value was given



QUERY WEB SERVICE

Query Web Service Enhancements

Query Web Service

- Query Web Service Parameters
 - New parameters to allow for more targeted results
 - **Sort**
 - Column to initially sort on
 - **Descending**
 - Specify initial sort sequence
 - Number of records to return

Settings
PVX Plus
TECHNOLOGIES LTD.
Web Services Maintenance

Service ID: CLIENT_BAL_OWING
Service Type: Query

Parameter	Value	Allow Override?
Title	Client Balance Owing (Top 15)	
Dir	*demo/2019	<input type="checkbox"/>
Lib	scrnlib.en	<input type="checkbox"/>
Qry	CLIENT_QRY	<input type="checkbox"/>
Type	HTML	<input type="checkbox"/>
Sort	Balance	<input type="checkbox"/>
Descending	<input checked="" type="checkbox"/>	<input type="checkbox"/>
Records	15	<input type="checkbox"/>

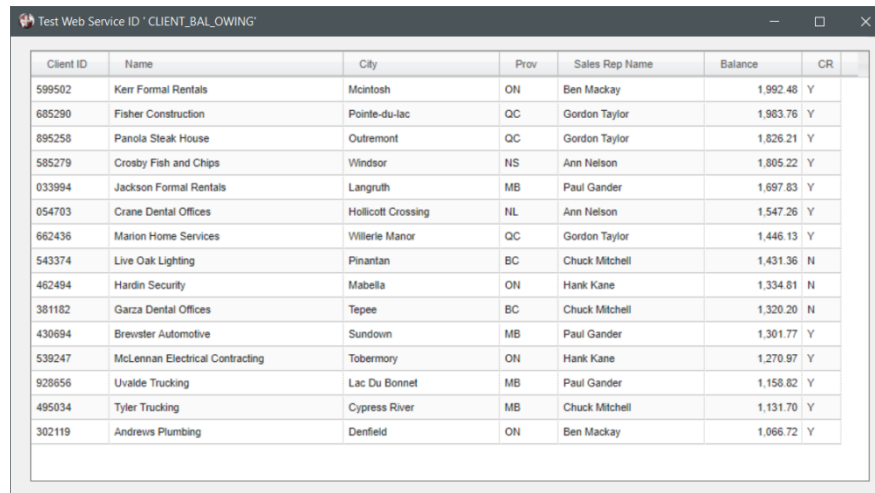
Add as an Option in JSON file

Test Write Delete Clear Exit

Query Web Service Enhancements

Query Web Service

- Example
 - Top 15 Customers with highest A/R Balances displayed in descending sequence



Client ID	Name	City	Prov	Sales Rep Name	Balance	CR
599502	Kerr Formal Rentals	McIntosh	ON	Ben Mackay	1,992.48	Y
685290	Fisher Construction	Pointe-du-lac	QC	Gordon Taylor	1,983.76	Y
895258	Panola Steak House	Outremont	QC	Gordon Taylor	1,826.21	Y
585279	Crosby Fish and Chips	Windsor	NS	Ann Nelson	1,805.22	Y
033994	Jackson Formal Rentals	Langruth	MB	Paul Gander	1,697.83	Y
054703	Crane Dental Offices	Hollcott Crossing	NL	Ann Nelson	1,547.26	Y
662436	Marion Home Services	Willerie Manor	QC	Gordon Taylor	1,446.13	Y
543374	Live Oak Lighting	Pinantan	BC	Chuck Mitchell	1,431.36	N
462494	Hardin Security	Mabella	ON	Hank Kane	1,334.81	N
381182	Garza Dental Offices	Tepee	BC	Chuck Mitchell	1,320.20	N
430894	Brewster Automotive	Sundown	MB	Paul Gander	1,301.77	Y
539247	McLennan Electrical Contracting	Tobermory	ON	Hank Kane	1,270.97	Y
928656	Uvalde Trucking	Lac Du Bonnet	MB	Paul Gander	1,158.82	Y
495034	Tyler Trucking	Cypress River	MB	Chuck Mitchell	1,131.70	Y
302119	Andrews Plumbing	Denfield	ON	Ben Mackay	1,066.72	Y

Additional Resources

The help link(s) below refer to the current on-line help pages. The functionality may have been further updated since the PxPlus 2019 (version 16) release.

- [Query Subsystem](#)
- [Query Header Definition](#)
- [Query AutoChart Wizard](#)
- [Query Profiles](#)
- [Query Profile Information Maintenance](#)
- [Query Bulk Edit](#)
- [Query Web Service](#)