



CHROMIUM BROWSER OBJECT *BROWSER ENHANCEMENTS

DireXions 2024



CHROMIUM BROWSER OBJECT - *BROWSER

CHROMIUM BROWSER OBJECT - *BROWSER

- Introduced in PxPlus 2017
 - Eliminate dependence on Shell.Explorer and Internet Explorer
 - Avoid Windows updates causing inconsistent results
- Embedded the Visual Chromium Web browser into PxPlus
 - Using Chromium Embedded Framework (CEF)
 - No need to have Chrome/Chromium installed
 - Best in-class for Web standards compliance
- **New Chromium update every major release**

New Features

- [*BROWSER Debug](#) mode allows the browser developer console to be displayed in a popup window
 - Debug mode can be set in the [BrowserDebug INI](#) setting or [BrowserDebug](#) 'OPTION' mnemonic
- New warning page will be displayed if the loaded Web page has a certificate error
 - Warning may be avoided if the server is added to the exceptions list using the [CertErrExceptions\\$](#) property

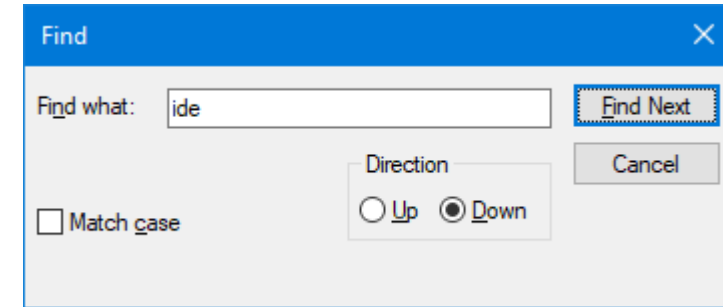
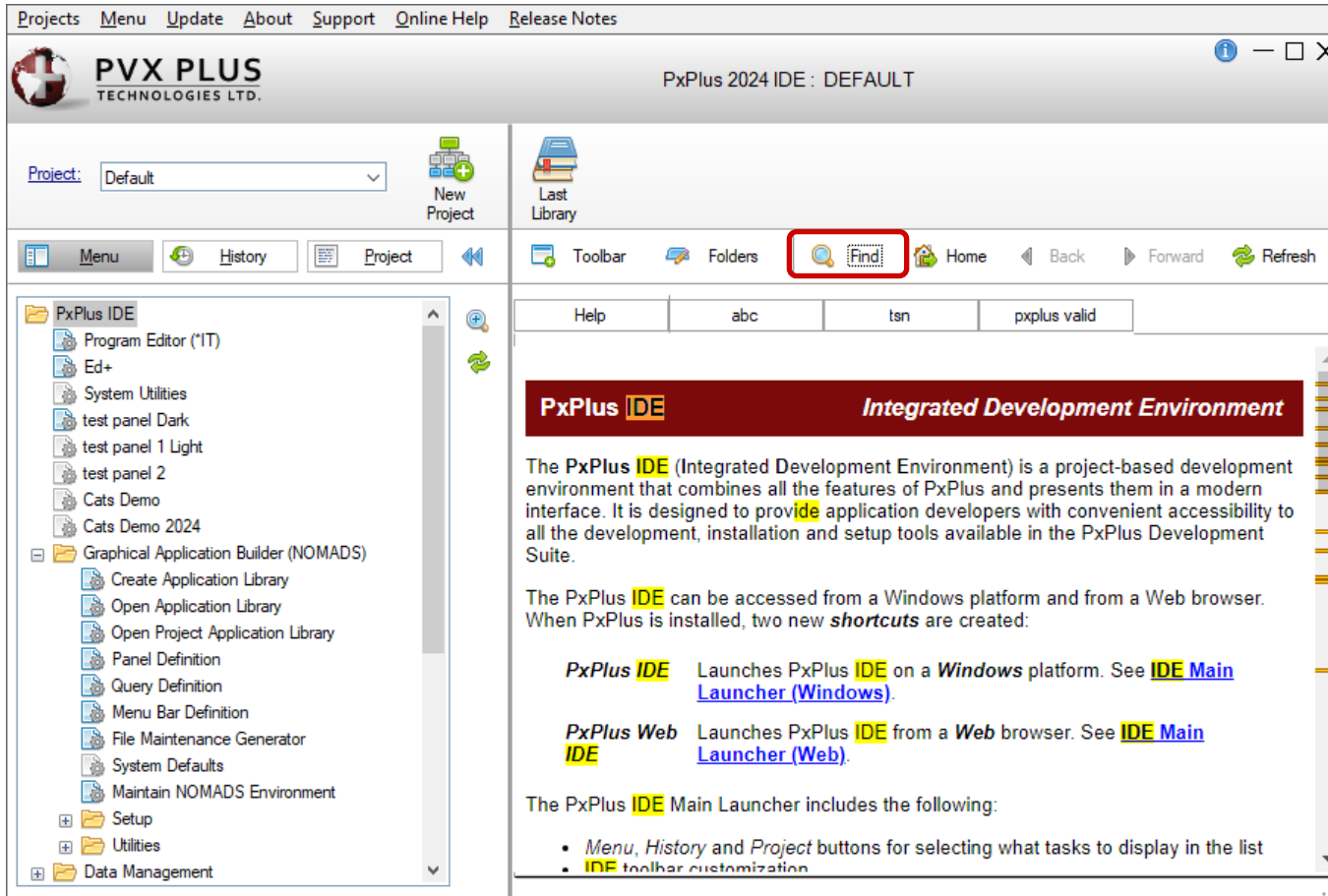
CHROMIUM BROWSER OBJECT - *BROWSER

New Properties and Methods

Property/Method	Description
CertErrExceptions\$	<p>Gets/Sets a comma-separated list of servers where certificate errors are ignored. Server portion of the URL must be specified.</p> <p>For the URL https://home.pvxplus.com/pgsrvr.pvp?pg=products, the server portion is only home.pvxplus.com:</p> <p>"localhost,127.0.0.1,192.168.1.100,home.pvxplus.com"</p>
DragDrop	<p>Gets/Sets whether the browser allows drag and drop into the browser control or popup windows.</p>
PrintToPDF(PdfPath\$)	<p>Saves the current contents of the browser as a PDF file.</p> <p>Where: <i>PdfPath\$</i> is the path that the PDF will be saved as</p>
FindHotKey	<p>Sets the hot key for opening the Find dialog. Setting property to 1 enables standard Ctrl+F Find hot key. A custom hot key can also be defined.</p>
Find()	<p>Opens the Find dialog, which allows users to search for specified text within the contents of a *BROWSER displayed Web page.</p>

CHROMIUM BROWSER OBJECT - *BROWSER

'Find' example in Enhanced IDE



<i>Find What</i>	Enter the search text. If text is selected in the Web page when the Find dialog is invoked, the selected text will be used as the default search text.
<i>Match case</i>	Select this option if the search is to be case sensitive. By default, this option is unchecked.
<i>Direction</i>	Searches up or down within the displayed Web page. By default, <i>Down</i> is selected.
<i>Find Next</i>	Finds the next occurrence of the specified search text.
<i>Cancel</i>	Cancels the search and closes the Find dialog.