

A photograph of the Tower Bridge in London, showing its two stone towers and blue suspension cables. The bridge is partially open, with the walkways raised. In the foreground, a small boat is on the River Thames. The sky is overcast with grey clouds. A large red banner with white text is superimposed over the middle of the image.

# EXTERNAL DATABASE IMPORT

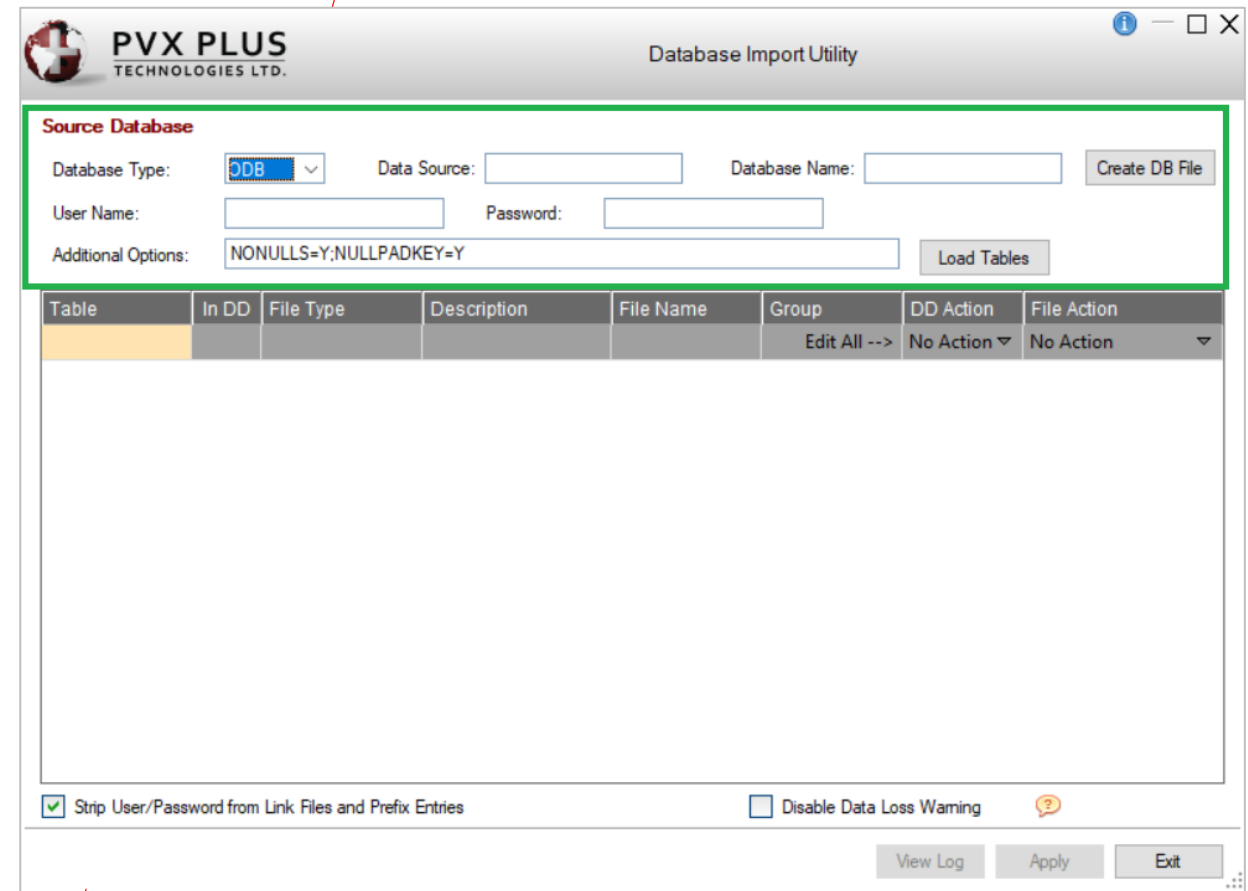
# EXTERNAL DATABASE IMPORT

- [Database Import Utility](#) allows you to define a connection to an external database and then selectively import tables into the PxPlus data dictionary
  - Create [Link Files](#) that point to tables in the database
  - Create Link Files that point to the database itself
  - Add entries to the [Prefix File](#) that point to tables in the database
  - Add entries to the Prefix File that point to the database itself
  - Create and load data from database tables to native PxPlus data files
- To invoke this utility, use one of the following methods:

Location	Method
From <a href="#">Data Dictionary Maintenance</a>	Click the <b>Import</b> toolbar button in the <b>Database</b> section of the toolbar
From <a href="#">Data Dictionary Maintenance</a>	From the menu bar, select <b>File &gt; Database Import Utility</b>
From the PxPlus Command line	Enter: <b>RUN "*dict/impdb"</b>

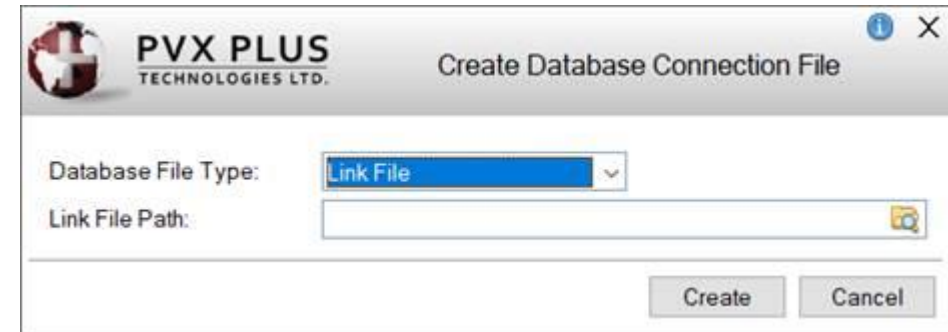
# EXTERNAL DATABASE IMPORT

- To connect to a database to import from, you must input the database connection information
- The utility remembers database connection information after successfully connecting to the database
  - Multiple database connections can be remembered, one connection for each database type
  - The connection information is remembered on a "per project" basis



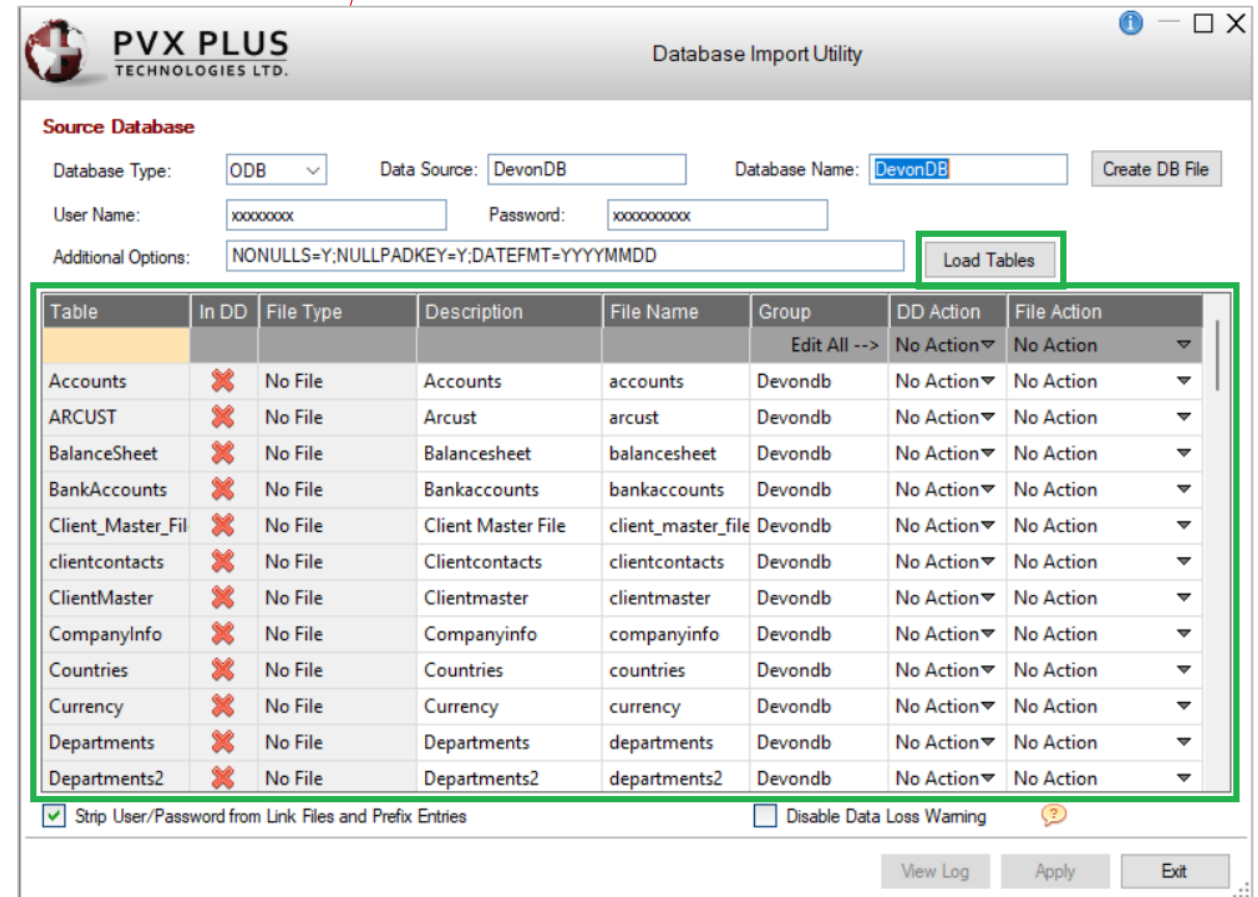
# EXTERNAL DATABASE IMPORT

- [Create DB File](#) button allows you to create either a Link File or a Prefix File entry that points to the database itself
  - This may be useful so that you can do a global OPEN to the database, providing the UserID and Password to avoid needing the UserID and Password on every Link/Prefix File entry
  - It can also be used to get a list of tables from the database or if your program needs to make direct queries against the database



# EXTERNAL DATABASE IMPORT

- **Load Tables** button - Lists the tables in the database, sorted in alphabetical order by default
- **In DD** column - A check mark indicates which table definitions are currently in the data dictionary
- **File Type** column - Tells you what type of file is in the data dictionary; i.e. No File, Native, ODB Link, etc.
- **Description, File Name and Group** columns - Used to specify what the values should be on import and what they are for the imported table
  - If not in the data dictionary, will auto fill with table name from database



# EXTERNAL DATABASE IMPORT

- **Actions** can be selected individually or for all tables
  - Use **Edit All** (first row) to select action for all tables
  - Use table row to select action for individual table
- **DD Action** - Can be used to:
  - Create data dictionary records
  - Merge data dictionary records
  - Replace data dictionary records
- **File Action** - Can be used to:
  - Create native PxPlus data files
  - Create database Link Files
  - Add database table entries to the Prefix File
- Actions are performed when the **Apply** button is clicked

**PVX PLUS TECHNOLOGIES LTD.** Database Import Utility

**Source Database**

Database Type: ODB Data Source: DevonDB Database Name: DevonDB Create DB File

User Name: xxxxxxx Password: xxxxxxxxx

Additional Options: NONULLS=Y;NULLPADKEY=Y;DATEFMT=YYYYMMDD Load Tables

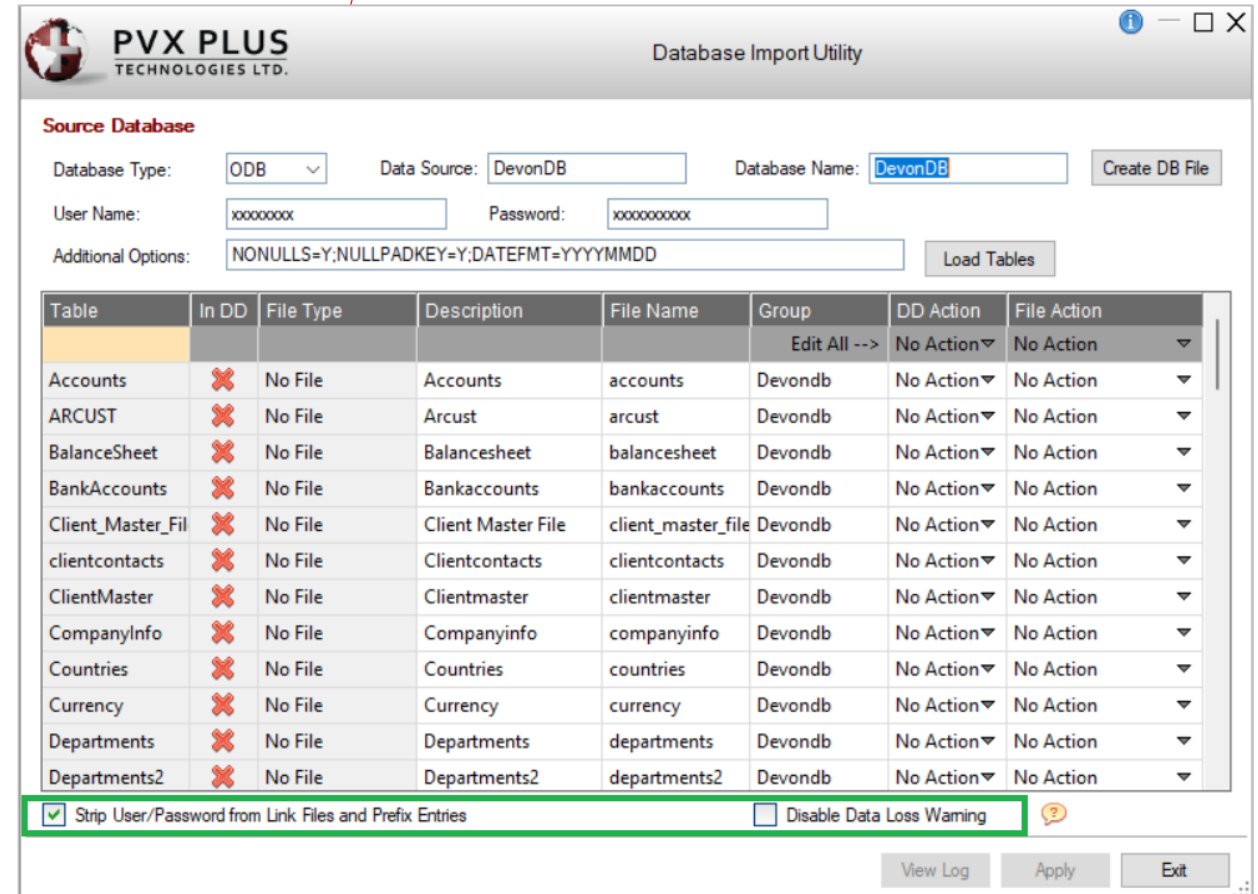
Table	In DD	File Type	Description	File Name	Group	DD Action	File Action
					Edit All -->	No Action	No Action
Accounts	✗	No File	Accounts	accounts	Devondb	No Action	No Action
ARCUST	✗	No File	Arcust	arcust	Devondb	No Action	No Action
BalanceSheet	✗	No File	Balancesheet	balancesheet	Devondb	No Action	No Action
BankAccounts	✗	No File	Bankaccounts	bankaccounts	Devondb	No Action	No Action
Client_Master_Fil	✗	No File	Client Master File	client_master_file	Devondb	Create Rec	No Action
clientcontacts	✗	No File	Clientcontacts	clientcontacts	Devondb	No Action	No Action
ClientMaster	✗	No File	Clientmaster	clientmaster	Devondb	No Action	No Action
CompanyInfo	✗	No File	Companyinfo	companyinfo	Devondb	No Action	No Action
Countries	✗	No File	Countries	countries	Devondb	No Action	No Action
Currency	✗	No File	Currency	currency	Devondb	No Action	No Action
Departments	✗	No File	Departments	departments	Devondb	No Action	No Action
Departments2	✗	No File	Departments2	departments2	Devondb	No Action	No Action

Strip User/Password from Link Files and Prefix Entries  Disable Data Loss Warning

View Log Apply Exit

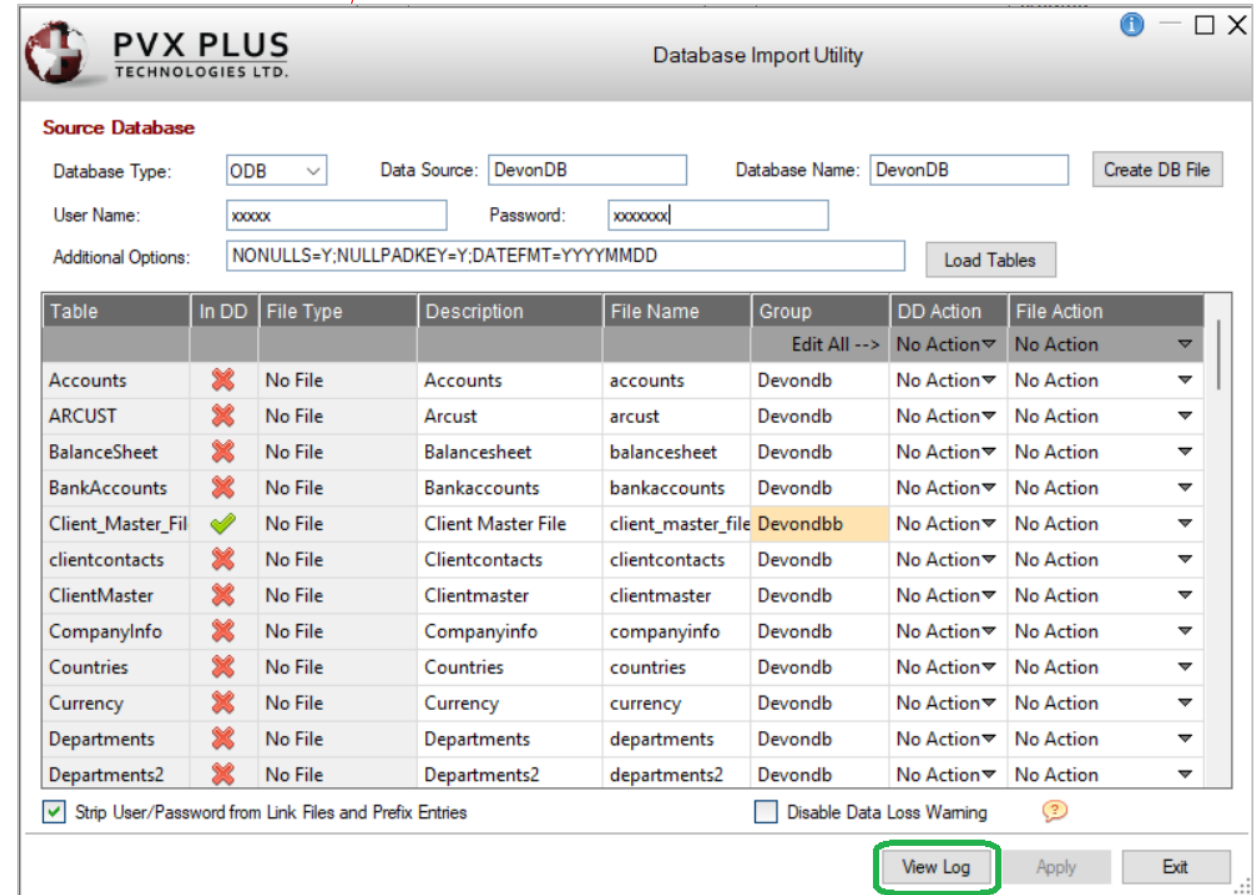
# EXTERNAL DATABASE IMPORT

- Check box option to control whether User/Password are stripped from Link Files and Prefix File entries
  - **On** by default to prevent the User and Password information from being saved in plain text
- Check box option to control whether the data loss warning message is displayed
  - Disable warning for actions that could possibly overwrite data
    - Creating/Replacing a table
    - Loading a table
    - Creating a Prefix File entry
    - Creating a Link File
  - **Off** by default to help prevent accidental data loss



# EXTERNAL DATABASE IMPORT

- **View Log** button
  - Available only when changes have been applied
  - Displays a log of applied changes as a PDF
  - Can print or save the log PDF, if desired





# EXTERNAL DATABASE IMPORT

## Importing external database tables programmatically via the [\\*dict/impdb](#) program

- The individual **Import** actions can be invoked programmatically
  - **Create/Merge/Replace a Database table into the Data Dictionary**

```
Call "*dict/impdb;CreateDDRecord", db_prefix$, connect$, db_name$, db_user$, db_pass$, db_options$, tableName$, description$, fileName$, groupName$, replace, result$
```

- **Add to Prefix File Entry for the External Database table**

```
Call "*dict/impdb;AddToPfxFile", db_prefix$, connect$, db_name$, db_user$, db_pass$, db_options$, tableName$, fileName$, stripPswd, noDataLossWarning, result$
```

- **Create Link File for the External Database table**

```
Call "*dict/impdb;CreateLinkFile", db_prefix$, connect$, db_name$, db_user$, db_pass$, db_options$, tableName$, fileName$, stripPswd, noDataLossWarning, result$
```

- **Create and Load Physical File from the External Database table**

```
Call "*dict/impdb;CreateAndLoadFile", db_prefix$, connect$, db_name$, db_user$, db_pass$, db_options$, tableName$, fileName$, noDataLossWarning, result$
```