



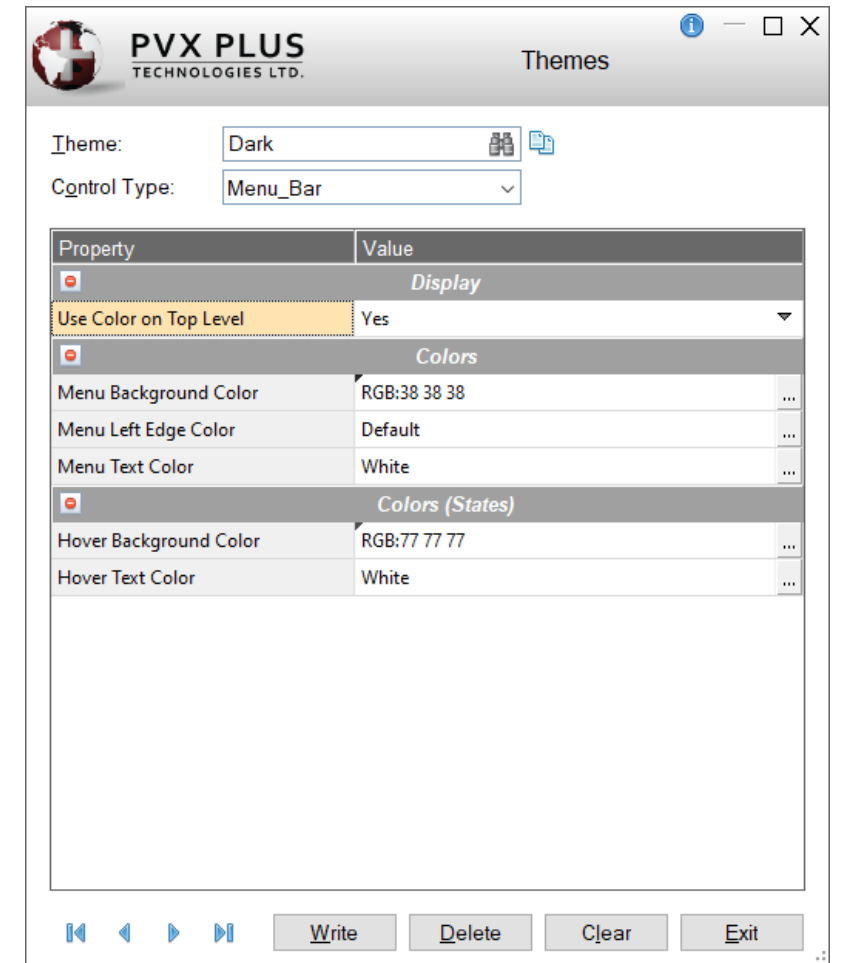
# NEW THEMES AND VISUAL CLASSES PROPERTIES

DireXions 2024

# THEMES AND VISUAL CLASSES

## [Menu Bar](#) and [Popup Menu](#) Properties - \*New\*

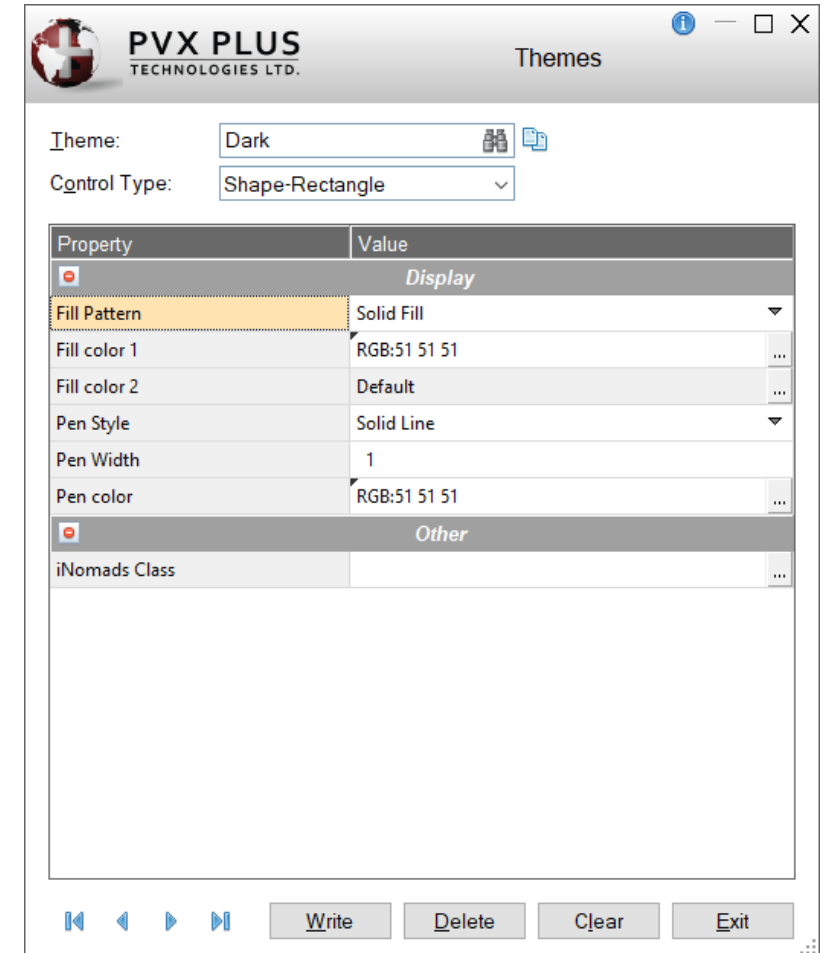
Property	Description
Use Color on Top Level	Apply the Text and Background menu colors to top level (Menu Bar only)
Menu Background Color	Applies a background color to the menu
Menu Left Edge Color	Applies a background color for the left edge portion of the menu. If not set, the menu background color is used
Menu Text Color	Applies a text color to the menu items
Hover Background Color	Color used for the background when hovering over an item
Hover Text Color	Color of the menu item text when the mouse hovers over it



# THEMES AND VISUAL CLASSES

[Shape-Circle](#), [Shape-Line](#) and [Shape-Rectangle](#) Properties - \*New\*

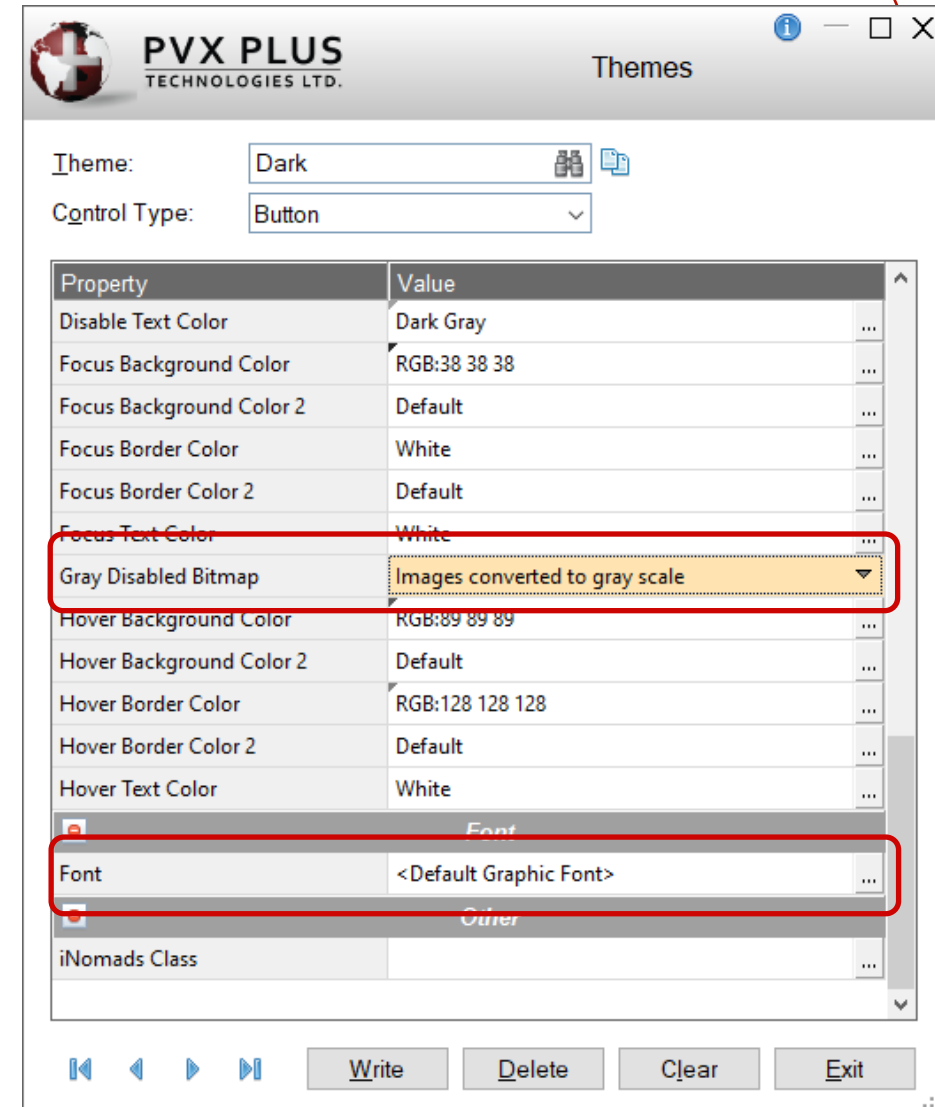
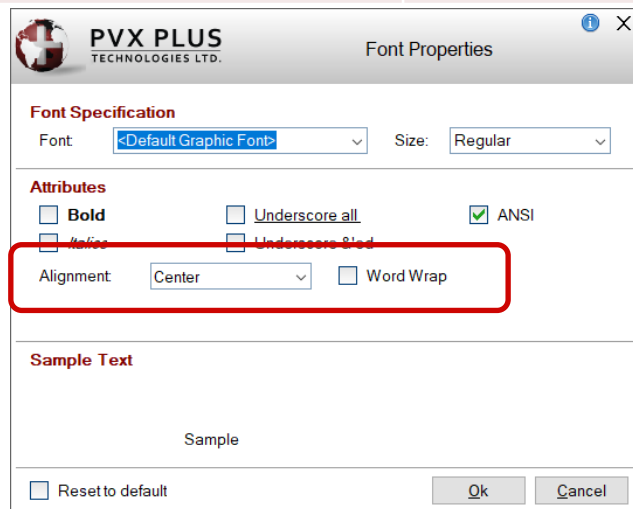
Property	Description
Fill Pattern	Select the direction of the gradient fill or pattern from pre-defined options
Fill Color 1	Color for shape
Fill Color 2	Second color for two-color gradient of fill patterns
Pen Style	Select pen style from pre-defined options
Pen Width	Pen width in graphical units. Valid entries are 0 - 255
Pen Color	Set the pen color using Color Selections dialog



# THEMES AND VISUAL CLASSES

## Button Properties

Property	Description
<a href="#">Gray Disabled Bitmap</a>	Image display for disabled buttons Available selections: <ul style="list-style-type: none"><li>- Default gray disabled setting (Default)</li><li>- Images display as shadows</li><li>- Images converted to gray scale</li></ul>
Font - Alignment and Word Wrap	Sets Alignment and Word Wrap



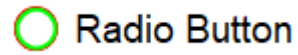
# THEMES AND VISUAL CLASSES

## Radio Button Properties

Property	Description
<a href="#">Radio Button Frame Color</a>	Color of the frame/outline circle (no bitmap)
<a href="#">Radio Button Mark Color</a>	Color of the circle in the radio button when clicked (no bitmap)
<a href="#">Gray Disabled Bitmap</a>	Image display for disabled buttons Available selections: - Default gray disabled setting (Default) - Images display as shadows - Images converted to gray scale
<a href="#">Radio Button Hover Color</a>	Hover color on mouse over (no bitmap)
Font - Alignment and Word Wrap	Sets Alignment and Word Wrap



Radio Button



Radio Button

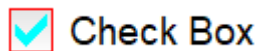
The screenshot shows the PVX PLUS THEMES application window. The 'Theme' is set to 'Dark' and the 'Control Type' is 'Radio\_Button'. A list of properties is displayed, with several highlighted by red boxes:

- Radio Button Frame Color:** Dark Gray
- Radio Button Mark Color:** Light Green
- Gray Disabled Bitmap:** Default gray disabled setting
- Radio Button Hover Color:** RGB:165 255 166
- Font:** <Default Graphic Font>

# THEMES AND VISUAL CLASSES

## [Check Box](#) and [Tristate Checkbox](#) Properties

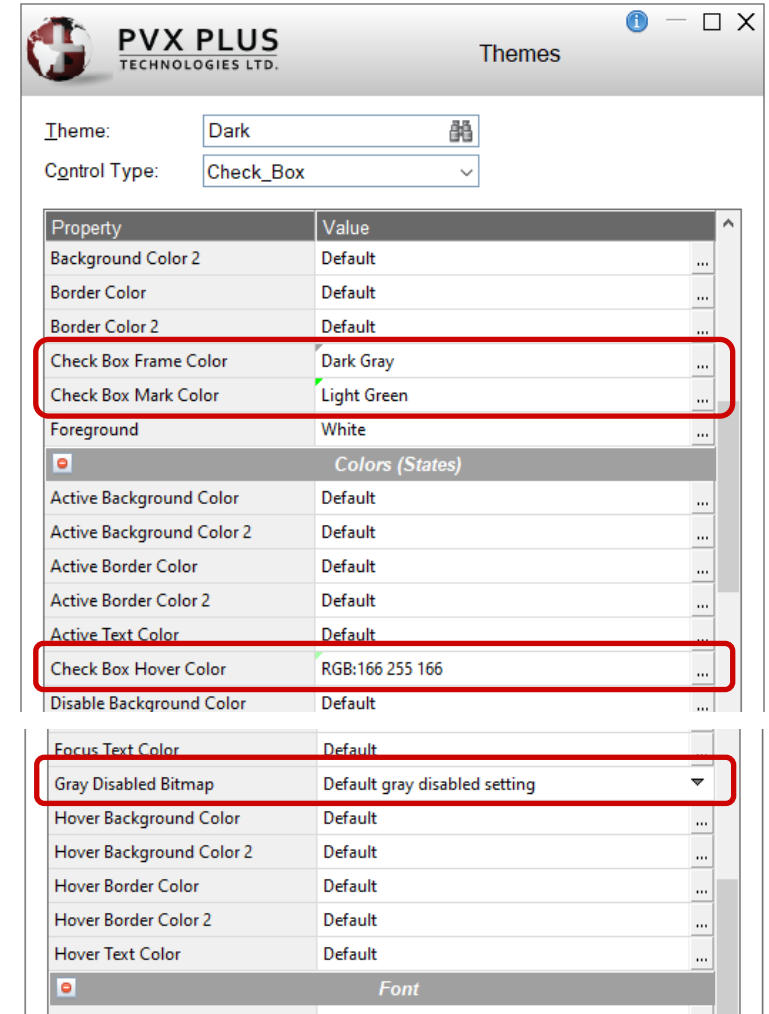
Property	Description
<a href="#">Check Box Frame Color</a>	Color of the frame/outline check box (no bitmap)
<a href="#">Check Box Mark Color</a>	Color of the check mark when checked (no bitmap)
<a href="#">Check Box Hover Color</a>	Hover color on mouse over (no bitmap)
<a href="#">Gray Disabled Bitmap</a>	Image display for disabled buttons Available selections: <ul style="list-style-type: none"><li>- Default gray disabled setting (Default)</li><li>- Images display as shadows</li><li>- Images converted to gray scale</li></ul>
Font - Alignment and Word Wrap	Sets Alignment and Word Wrap



Check Box



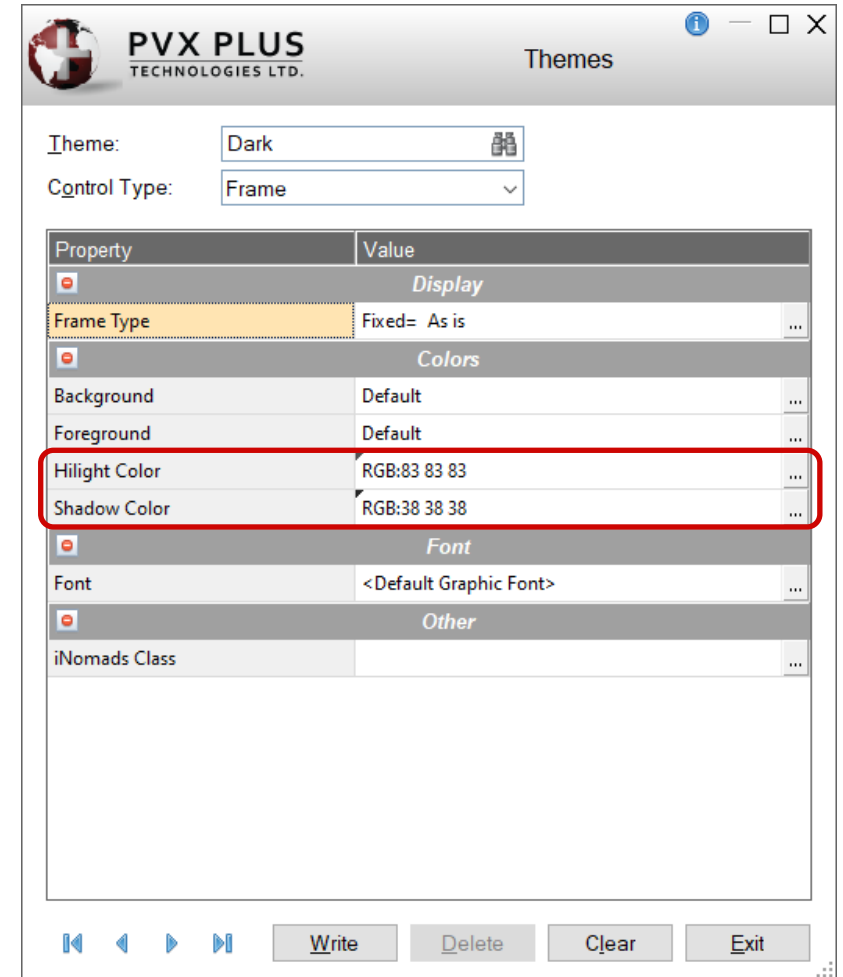
Check Box



# THEMES AND VISUAL CLASSES

## Frame Properties

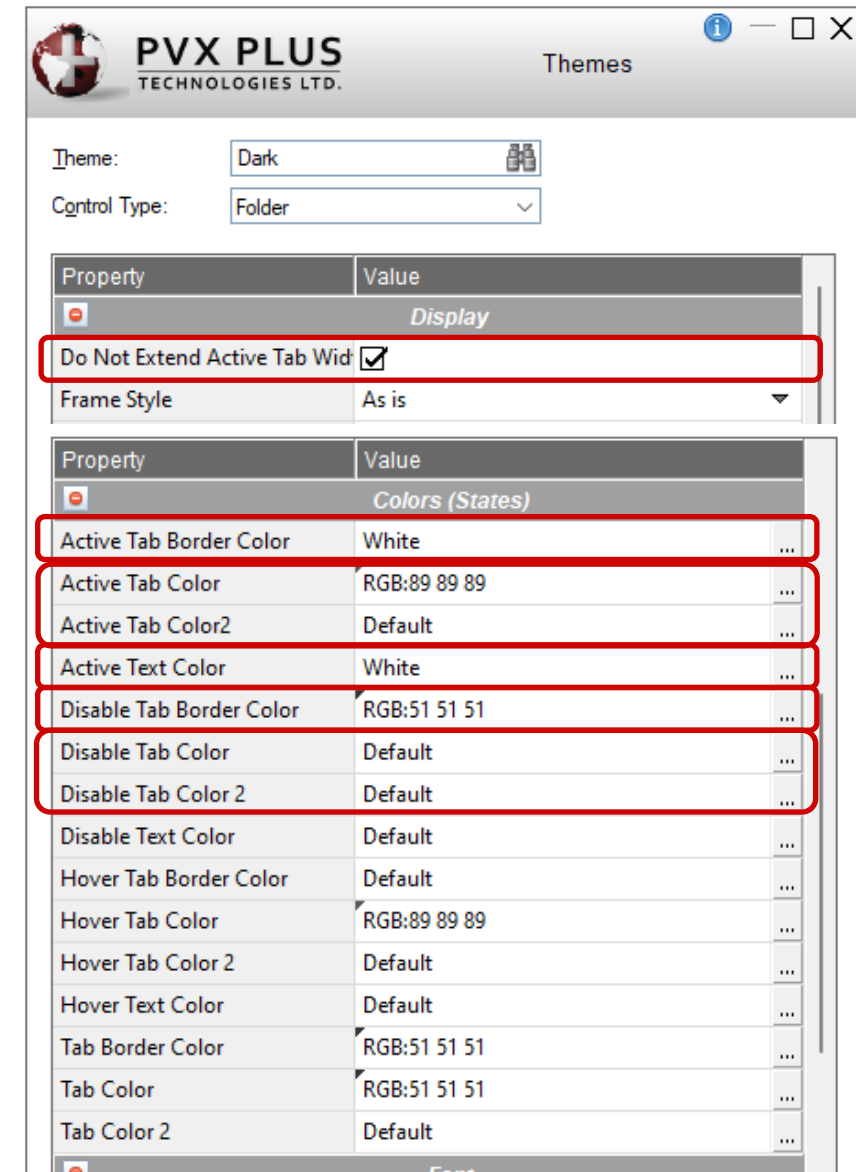
Property	Description
<a href="#">Highlight Color</a>	Color of the highlight line for non-Text Mode frame styles. Default is Light Gray
<a href="#">Shadow Color</a>	Color of the shadow line for non-Text Mode frame styles. Default is Dark Gray



# THEMES AND VISUAL CLASSES

## Folder Properties

Property	Description
<a href="#">Do Not Extend Active Tab Width</a>	Active tab will remain the same width as inactive tabs when using sidebar folders
<a href="#">Active Tab Border Color</a>	Color of the active folder tab border on sidebar tabs
Active Tab Color, Active Tab Color 2	Background color(s) of the folder tab when the folder is active
Active Text Color	Foreground text color of the folder tab when the folder is active
<a href="#">Disable Tab Border Color</a>	Color of the disabled folder tab border on sidebar tabs
Disable Tab Color, Disable Tab Color 2	Background color(s) of the folder tab when the folder is disabled





# THEMES AND VISUAL CLASSES

## Folder Properties

Property	Description
Disable Text Color	Foreground text color of the folder tab when folder is disabled
<a href="#">Hover Tab Border Color</a>	Hover color of the folder tab border on sidebar tabs
Hover Tab Color, Hover Tab Color 2	Hover Background color(s) of the folder tab on mouse over
Hover Text Color	Hover Foreground text color on mouse over
<a href="#">Tab Border Color</a>	Color of the folder tab border on sidebar folders
Tab Color, Tab Color 2	Background color(s) of the folder tab when in its normal state

The screenshot shows the 'PVX PLUS TECHNOLOGIES LTD. Themes' application window. It features a 'Theme:' dropdown set to 'Dark' and a 'Control Type:' dropdown set to 'Folder'. Below these are two tables of properties. The first table, titled 'Display', includes 'Do Not Extend Active Tab Width' (checked) and 'Frame Style' (set to 'As is'). The second table, titled 'Colors (States)', lists various properties with their values and color pickers. A red box highlights the following properties in the 'Colors (States)' table: 'Disable Text Color' (Default), 'Hover Tab Border Color' (Default), 'Hover Tab Color' (RGB:89 89 89), 'Hover Tab Color 2' (Default), 'Hover Text Color' (Default), 'Tab Border Color' (RGB:51 51 51), 'Tab Color' (RGB:51 51 51), and 'Tab Color 2' (Default).

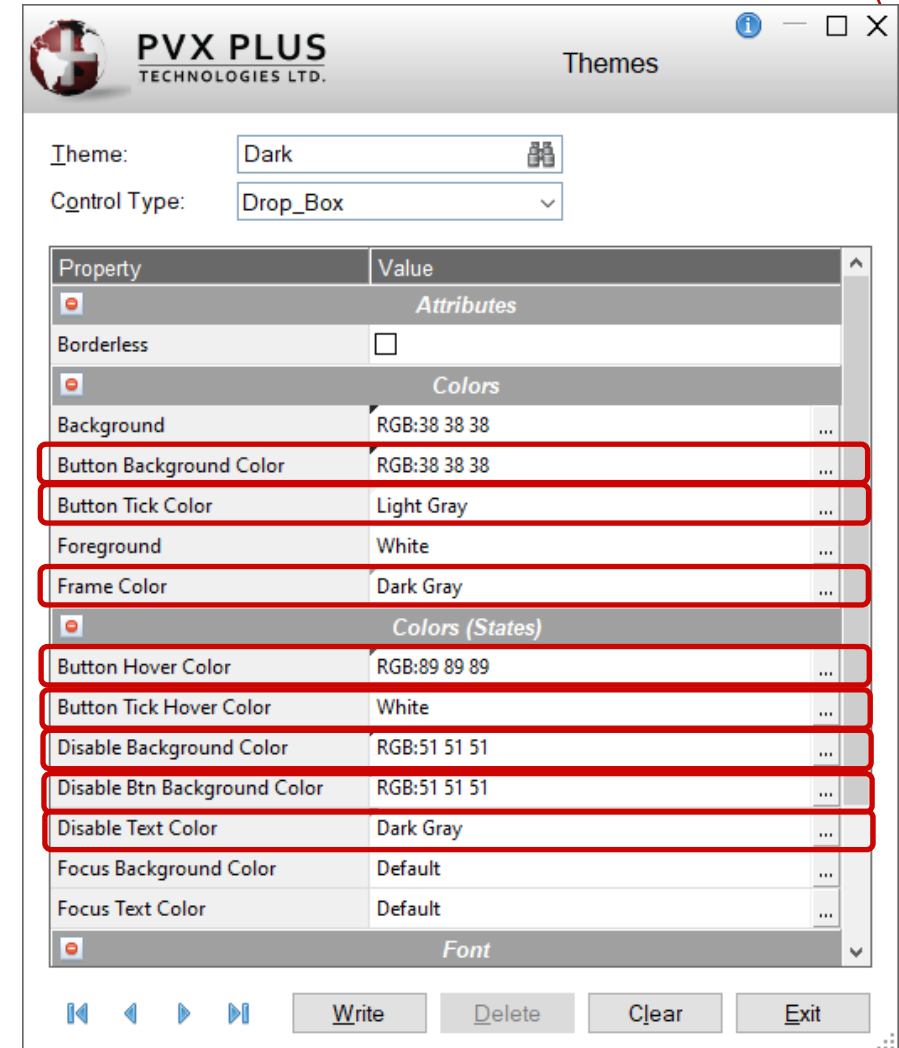
Property	Value
<i>Display</i>	
Do Not Extend Active Tab Width	<input checked="" type="checkbox"/>
Frame Style	As is
<i>Colors (States)</i>	
Active Tab Border Color	White
Active Tab Color	RGB:89 89 89
Active Tab Color2	Default
Active Text Color	White
Disable Tab Border Color	RGB:51 51 51
Disable Tab Color	Default
Disable Tab Color 2	Default
Disable Text Color	Default
Hover Tab Border Color	Default
Hover Tab Color	RGB:89 89 89
Hover Tab Color 2	Default
Hover Text Color	Default
Tab Border Color	RGB:51 51 51
Tab Color	RGB:51 51 51
Tab Color 2	Default

# THEMES AND VISUAL CLASSES

## Drop Box and Variable Drop Boxes Properties



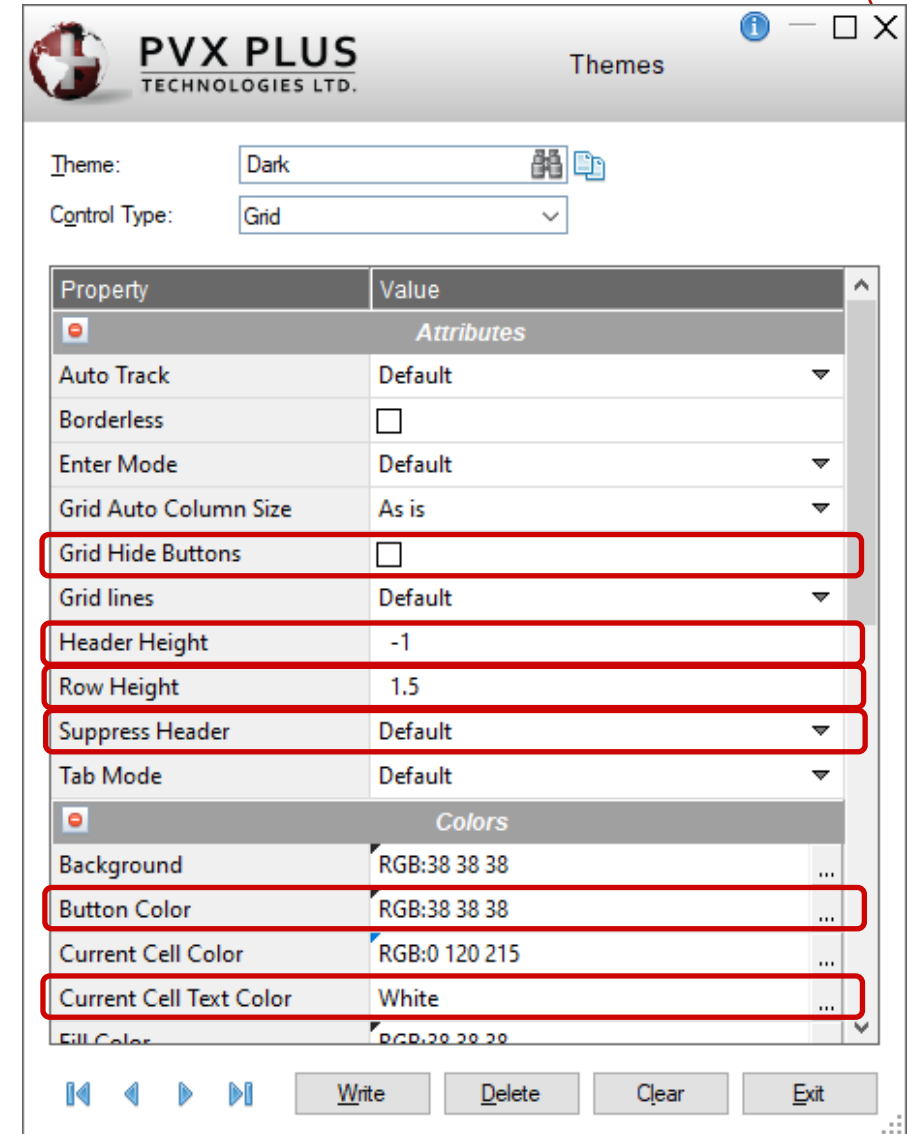
Property	Description
<a href="#">Button Background Color</a>	Background color for the button
<a href="#">Button Tick Color</a>	Color of the tick on the button
<a href="#">Frame Color</a>	Color of the frame/border around the control
<a href="#">Button Hover Color</a>	Hover background color for the button
<a href="#">Button Tick Hover Color</a>	Hover color of the tick on the button
Disable Background Color	Background color when the control is disabled
<a href="#">Disable Btn Background Color</a>	Background color of button when the control is disabled
Disable Text Color	Foreground text color when the control is disabled



# THEMES AND VISUAL CLASSES

## Grid Properties

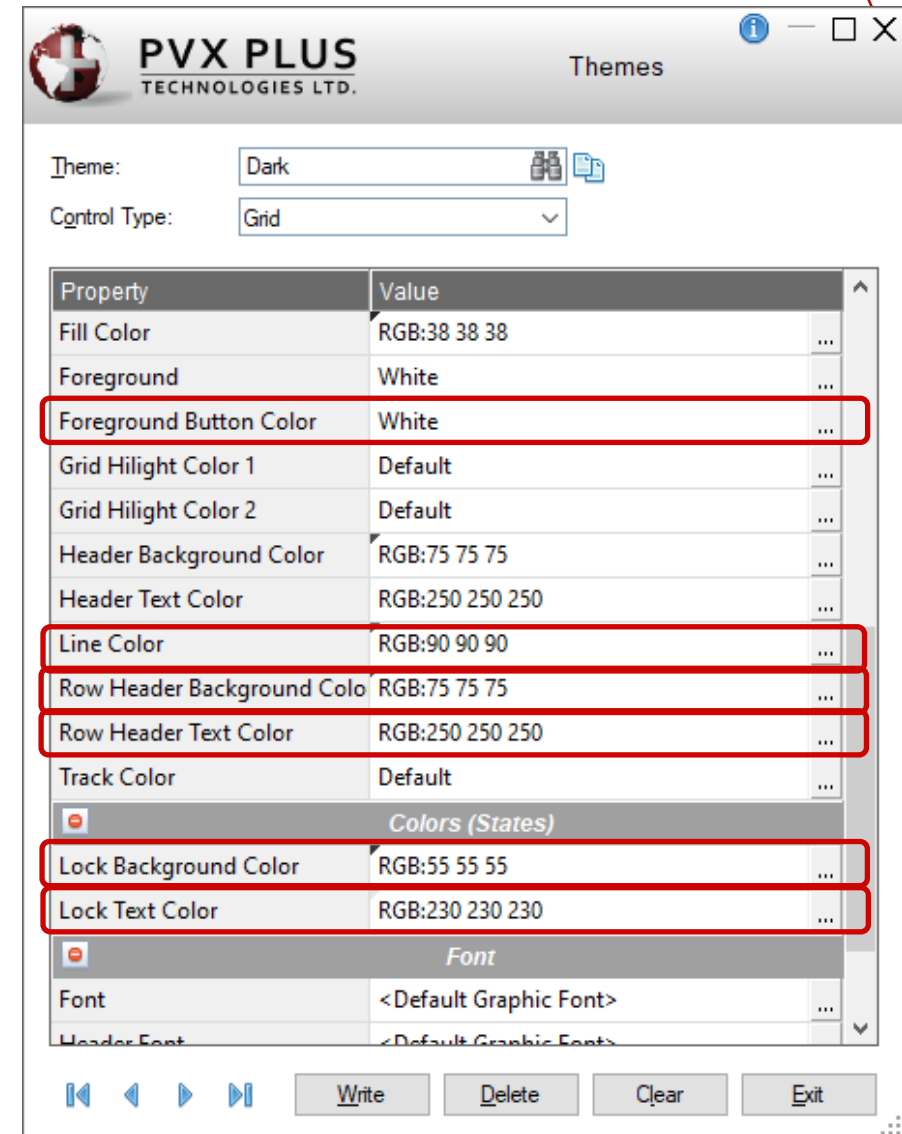
Property	Description
Grid Hide Buttons	Hides query buttons or drop box images associated with grid cells
Header Height	Controls the height of the grid header in pixels -1 restores the height to its default size
Row Height	Controls the row height in the grid New -1 option to default row height
Suppress Header	Suppress headers – row, column, both, none
Button Color	Background color for system-generated buttons
<u>Current Cell Text Color</u>	Text color for current cell



# THEMES AND VISUAL CLASSES

## Grid Properties

Property	Description
<a href="#">Foreground Button Color</a>	Foreground text color for system-generated buttons
Line Color	Color of the lines drawn between rows and columns
<a href="#">Row Header Background Color</a>	Background color for the leading left column only (colno -1)
<a href="#">Row Header Text Color</a>	Text color for the leading left column only (colno -1)
<a href="#">Lock Background Color</a>	Background color when the cell is locked
<a href="#">Lock Text Color</a>	Foreground text color when the cell is locked

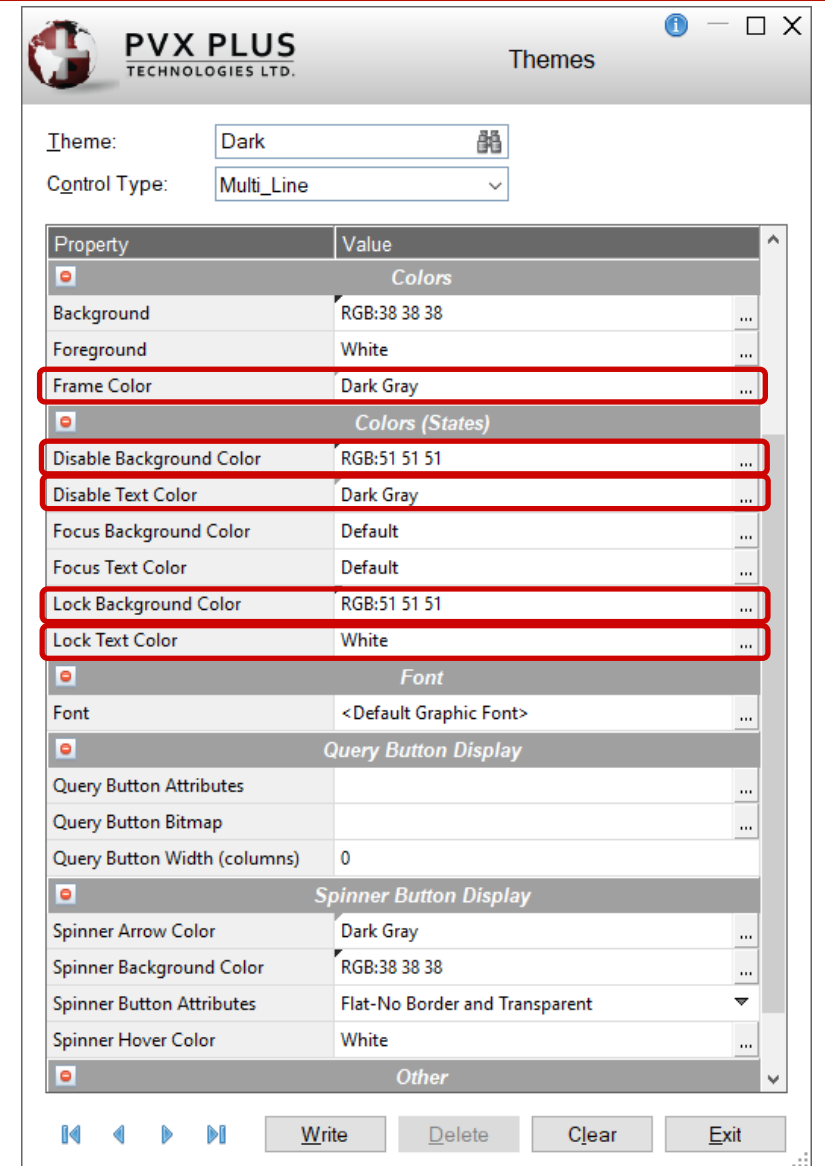


# THEMES AND VISUAL CLASSES

## Multi-Line Properties

Property	Description
Frame Color	Color of the frame/border around the control
Disable Background Color	Background color when the control is disabled
Disable Text Color	Foreground text color when the control is disabled
<u>Lock Background Color</u>	Background color when the control is locked
<u>Lock Text Color</u>	Foreground text color when the control is locked

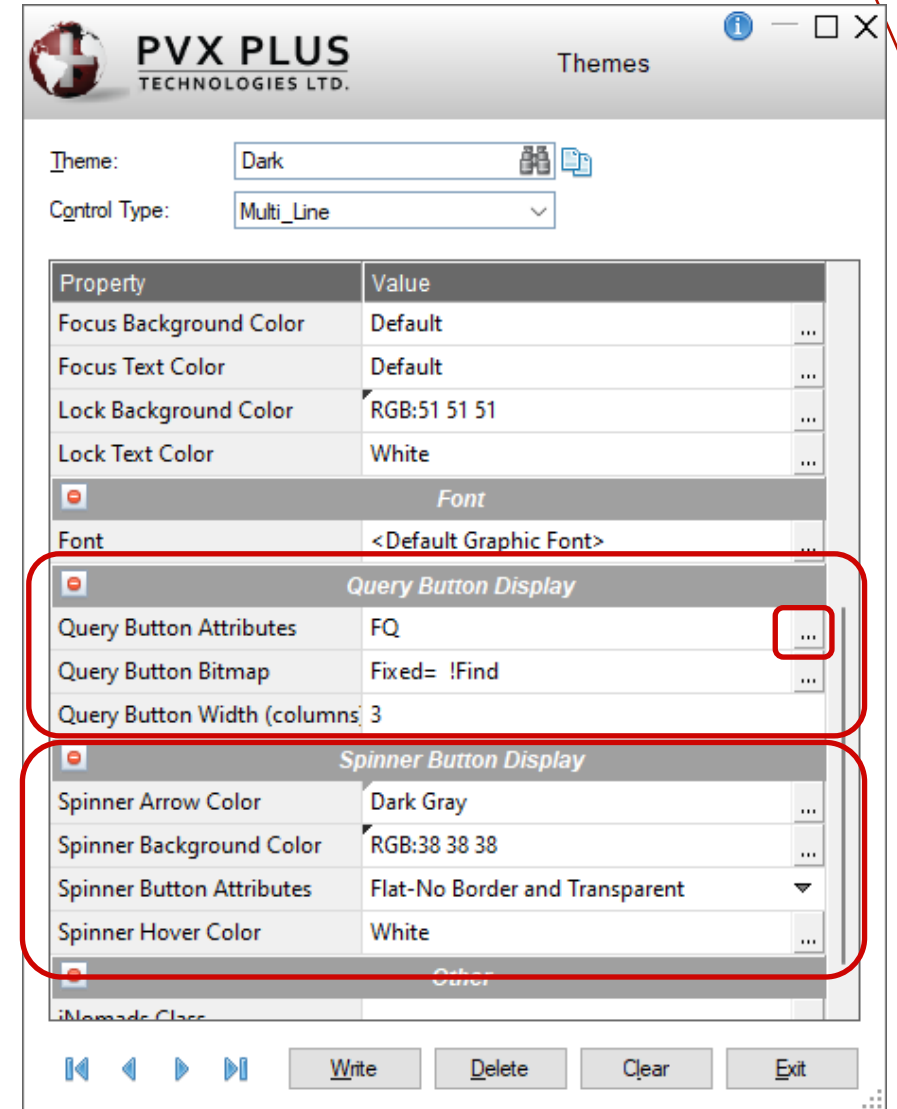
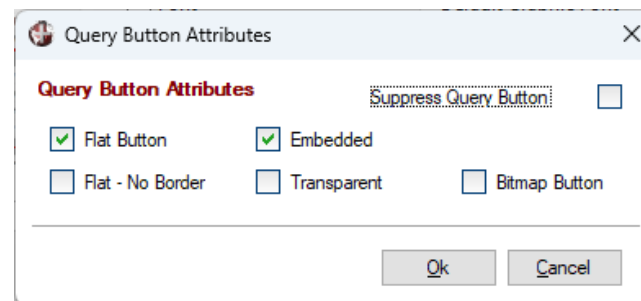
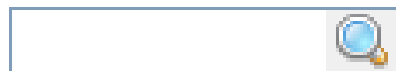
Multi line



# THEMES AND VISUAL CLASSES

## Multi-Line Properties

Property	Description
<a href="#">Query Button Display</a>	Set options for the query button <ul style="list-style-type: none"> <li>- Query button attributes</li> <li>- Query button bitmap</li> <li>- Query button width (columns)</li> </ul>
<a href="#">Spinner Button Display</a>	Controls the appearance of the spinner button <ul style="list-style-type: none"> <li>- Spinner arrow color – chevron color</li> <li>- Spinner background color</li> <li>- Spinner button attributes – attributes settings</li> <li>- Spinner hover color – chevron hover color</li> </ul>



# THEMES AND VISUAL CLASSES

## List Box Properties

Property	Description
Header Height	Header height in Report View lists in pixels -1 restore height to default size
<a href="#">Lines Per Row</a>	Controls line row height New -1 option to use default lines per row
<a href="#">Frame Color</a>	Color of the frame/border around the control
Line Color	Color of the lines for Report and Tree View
Disable Background Color	Background color when the control is disabled
Disable Text Color properties	Foreground text color when the control is disabled

Property	Description (Variable List Box)
<a href="#">Frame Color</a>	Color of the frame/border around the control

